

AWNINGS

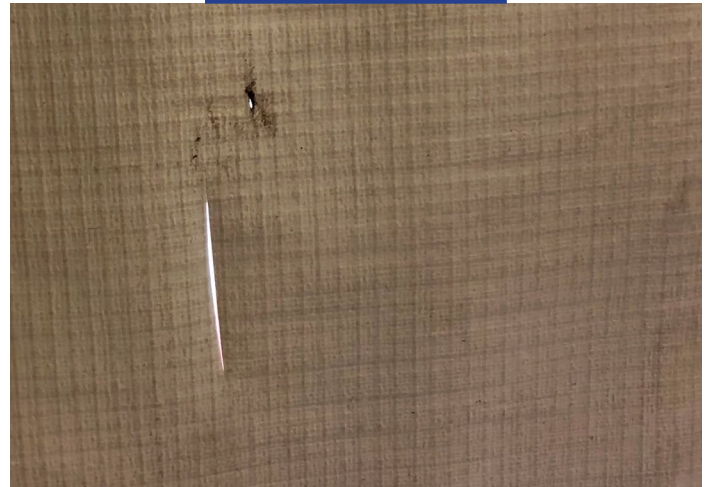
Product Information

Occasionally damage may occur to the awning fabric on products. If damage occurs causing a pin hole or a rip in the fabric, it can be corrected without requiring replacement of the product. In place of ordering a completely new item, a quick and inexpensive repair can be made to correct the damage. The photos show examples of the type of damage which can be repaired by the approved contractor (listed below) when needed.

Fabric Pin Hole Damage



Fabric Rip Damage



Approved Contractor For Repairing LCI Products:

1. Fibernew
PH: 1-800-345-2951
www.fibernew.com

As a supplier of components to the RV industry, safety, education and customer satisfaction are our primary concerns. Should you have any questions, please do not hesitate to contact us at (574) 537-8900 or by email at customerservice@lci1.com. Self-help tips, technical documents, product videos and a training class schedule are available at lci1.com or by downloading the MyLCI app.