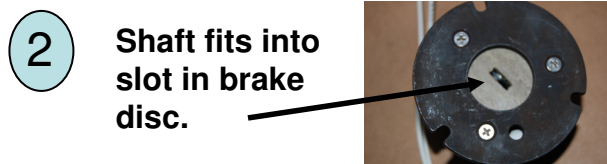
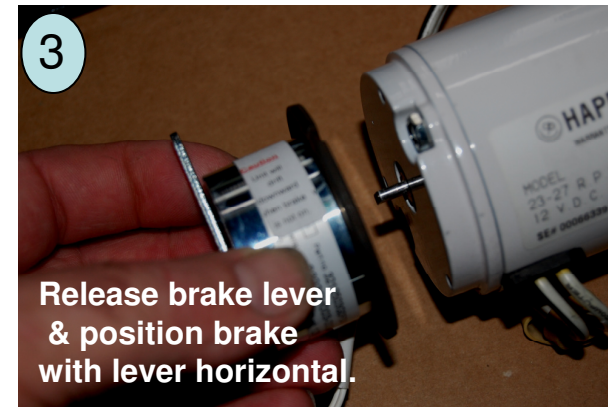
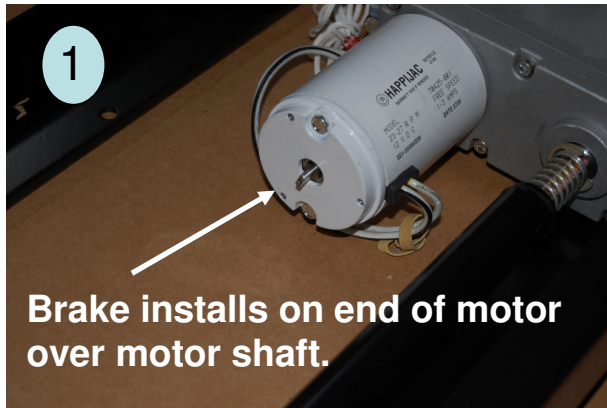


ADDING OR REPLACING A SOLENOID BRAKE

The brake wires in parallel with the motor such that when the motor is energized, it releases the brake and when the motor is de-energized, the brake sets and does not allow the slider / bed lift to drift.



Install the 3 mounting screws & reset brake lever.

- 5 The brake wires are wired in parallel with the motor wires. There is no polarity therefore it does not matter which brake wire goes to which motor wire. Crimp on automotive style connectors can be used, or electrical wire nuts.