

**DOORS**

**Purpose**

This document describes the procedure to replace all current rear ramp door spring and hinge configurations. Customary labor will not exceed 1.5 hours.

**Required Resources**

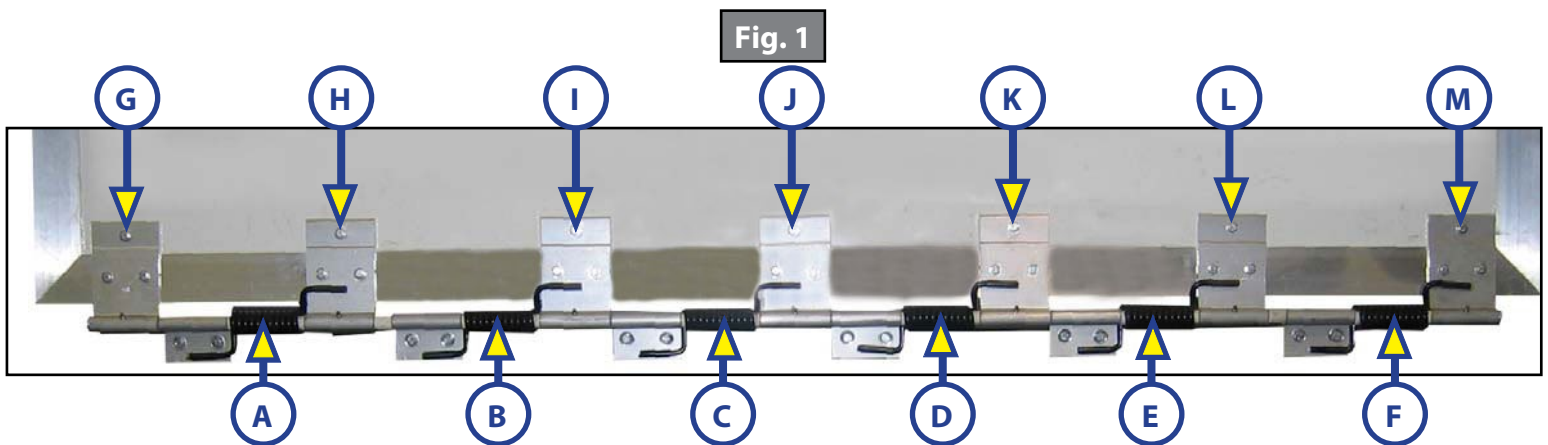
- Small locking pliers
- Large locking pliers
- 16 oz. claw hammer
- Pair PVC cutters
- Impact wrench
- ½" socket
- Socket wrench
- Roll of duct tape
- Section of ⅝" PVC

Replacement Kit #181971	
Quantity	Description
6	Light Duty Springs
7	Upper Hinges
1	18" Steel Rod
1	Replacement Hinge Rod
2	Aluminum Caps
4	Plastic Bushings

**Instructions**

Read all instructions before starting this procedure.

There are two configurations, the first with six springs and the second with five springs. The current springs (Fig. 1A-1F), (medium duty) and upper hinges, (Fig. 1G-1M), **MUST** be changed over to six all new springs (light duty) and upper hinges from replacement kit #181971. The hinge rod only needs to be replaced if rusted or damaged.



## DOORS

Fig. 2



Fig. 3



Fig. 4



Fig. 5



1. Using the ½" socket and impact wrench, tighten each ½" bolt to maximize the use of the duct tape.
2. Clean star head area thoroughly with brake cleaner to remove any oil or grease that would prevent the duct tape from sticking.
3. Remove upper hinge 1, (Fig. 1) on left side of rear ramp door, (Fig. 1), by removing bolts. Start by opening the rear ramp door. Using duct tape, tape the three star heads on the inside of the rear ramp door. Be sure to follow all four steps shown in (Fig. 2-5) exactly as shown. Tape all upper hinges in this manner prior to beginning the removal process. Be sure to tuck each layer of tape tightly around each star head to ensure that they bind when removing bolts from other side. Using a ½" socket, begin removing upper hinges (Fig. 7).
4. Once the upper hinge has been removed, the hinge rod is exposed about four inches. Carefully but firmly tap the hinge rod to the right with the hammer and the 18" steel rod. Stop when the left end of the hinge rod clears the second upper hinge. The cap (Fig. 8) on the last upper hinge will come out and will need to be replaced.
5. Remove the 18" steel rod from the hinge assembly. The first spring can then be removed.
6. Remove and replace the second upper hinge and insert plastic bushings (Fig. 9).

Fig. 6

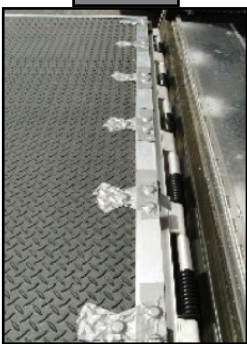


Fig. 7

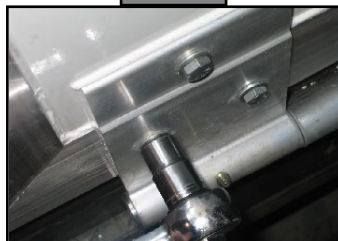
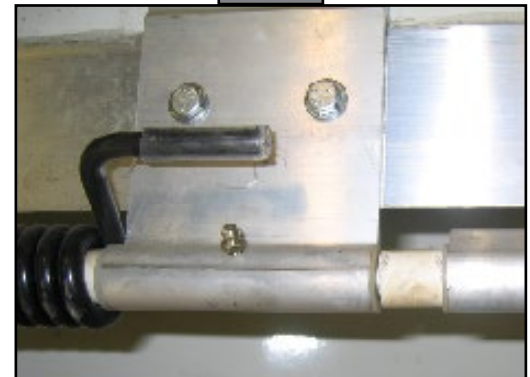


Fig. 8



Fig. 9



7. Insert the new hinge rod into the first lower hinge. As the new hinge rod is fed through the first lower hinge, (drive it approximately ½" - ¾" past lower hinge) replace the PVC spacers, (Fig. 9 if needed) and the new first spring. Next feed it through the new upper hinge.

**DOORS**

- Using the two large locking pliers, clamp pliers on right end of hinge rod. Clamp pliers next to but opposing each other (Fig. 10).

Fig. 10



Fig. 11

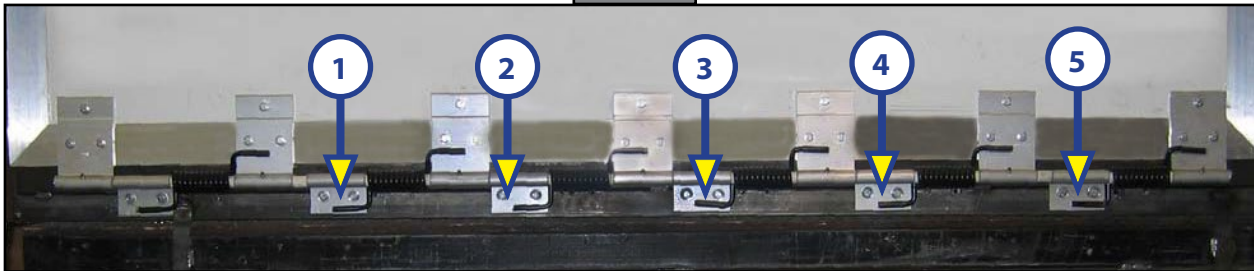


Fig. 12



- With the locking pliers clamped onto the hinge rod, begin twisting and pulling the hinge rod out to the right side of the door. Be sure to only pull the rod past one hinge and spring assembly at a time (Fig. 11-Stop Points).
- As the old hinge rod is removed and the new upper hinge replaced, continue to feed the new hinge rod into the replaced assemblies from the left side of the door.
- When the old hinge rod has been completely removed and the new hinge rod and last upper hinge installed, install the aluminum cap (Fig. 8) in the upper hinge (Fig. 12A).

As a supplier of components to the RV industry, safety, education and customer satisfaction are our primary concerns. Should you have any questions, please do not hesitate to contact us at (574) 537-8900 or by email at [customerservice@lci1.com](mailto:customerservice@lci1.com). Self-help tips, technical documents, product videos and a training class schedule are available at [lci1.com](http://lci1.com) or by downloading the MyLCI app.