

DOORS

Purpose

This document provides the steps to replace the seal around a baggage door.

⚠ CAUTION

Moving parts can pinch, crush or cut. Keep clear and use caution.

Installation

1. Locate the seam (Fig. 1A) in the baggage door seal, which is installed on the outer frame of the door.
2. Pull up on the seal (Fig. 2A) from the front and back at the seam to get the removal started.
3. Remove the seal all the way around the outer frame and discard.
4. Start the new baggage door seal on the bottom center of the outer frame of the door (Fig. 3A).
5. Press the new baggage door seal tight into the outer frame of the door.

NOTE: Pay close attention to the corners of the outer frame to make sure the seal is tight in the radius (Fig. 4A). If not installed correctly, the door could leak.

6. Ensure the beginning and end seams are tightly fitted together where they meet (Fig. 5A).

Fig. 1

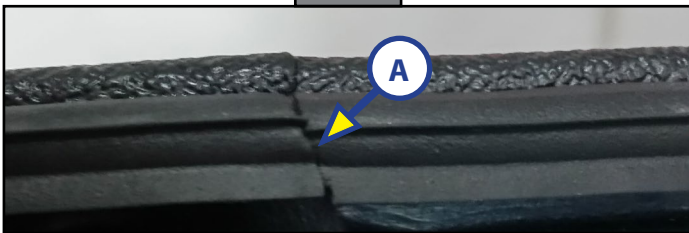


Fig. 2

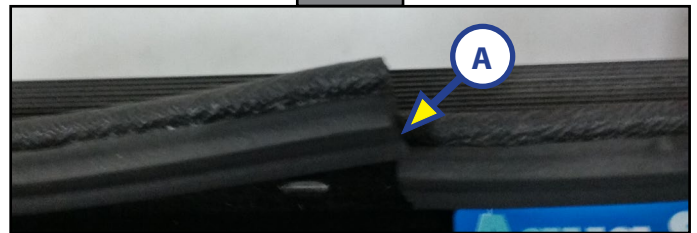


Fig. 3

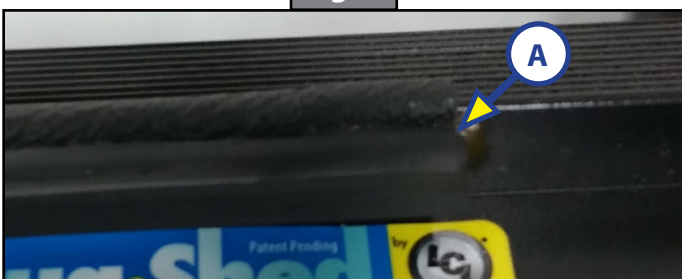


Fig. 4

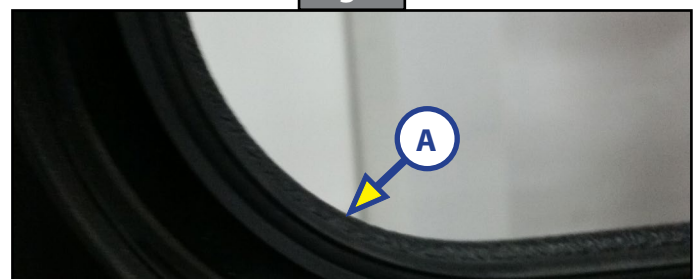
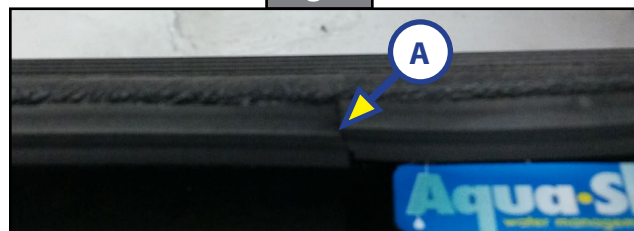


Fig. 5



As a supplier of components to the RV industry, safety, education and customer satisfaction are our primary concerns. Should you have any questions, please do not hesitate to contact us at (574) 537-8900 or by email at customerservice@lci1.com. Self-help tips, technical documents, product videos and a training class schedule are available at lci1.com or by downloading the MyLCI app.