



# REFERENCE ONLY

Home
Site Map

Home
Models
Installation
Applications
FAQ
Contact Us

## Applications

### **Motor Coaches and Bus Conversions**

Joey Bed created the Dual Extender model to allow access to cargo from either side of a Class A coach. **Dual Extender** units increase accessibility, flexibility and cost efficiency. Also available in **Junior** models for single, one-way rollout installations. Pack gear into previously hard to reach storage areas of your RV / Fifth Wheel Trailer / Motor Coach. Batteries, freezer units, generators, toolboxes, televisions and any other equipment stored on a Joey Bed becomes quickly and easily accessible.



### **Construction / Service vehicles**

Tools are the key to a healthy construction business. Joey Beds help construction workers arrange, secure and find their valuable gear. Pull out beds reduce the need to lift heavy equipment from odd angles, minimizing the risk of back injuries.



### **Horticulture**

Heavy loads of plants, hay, fertilizers, etc can strain your back while lifting in and out of your truck. Joey Beds help reduce the stretching involved, reducing strain and increasing productivity!



### **Fire / Emergency / Rescue**

Speed is the key to effective emergency services. Joey Beds help emergency workers keep their equipment orderly, and the pull out function makes it easier to find what's needed when it's needed.



### **Fleet / Medical**

Joey Bed has an array of sizes to fit every industry. Loading and unloading equipment, tools, gear, etc can cause time consuming delays. Joey Beds provide safety, organization, easy accessibility, convenience and increase productivity. They also allow workers to access "dead areas" in your van or pickup that otherwise would not be reached without climbing into the vehicle. Using a Joey Bed has proven to lower injuries and insurance claims.



**Service Bodies**

Joey Bed has a special system that can let you stack drawer units maximizing the storage space and functionality of your service vehicle. Our custom unit will allow you to use the maximum width available for all drawers.



---

Joey Bed • 800 962 2881 • customerservice@joeybed.com  
© Joey Bed 2009

Home
Site Map




Home
Models
Installation
Applications
FAQ
Contact Us

## Joey Bed Dual Extenders



- Lengths: 80", 84", 90", 92", 94", 96"
- Cantilevers 70% of either side of coach/bus
- 11 gauge steel transport rails
- 7" - 16 gauge steel sidewalls
- Fourteen 1,300 lb precision sealed bearings
- 8 side thrust bearings
- Easy operating spring latch opens from both sides with multiple locking positions
- Industrial powder coating
- Easy installation with illustrated guide
- LTL Shipping (F.O.B. Mishawaka, IN 46544)



### Dual Extender Part Numbers

Part Number	Description
901000084	80" Dual Extender Tray
901000083	84" Dual Extender Tray
901000082	90" Dual Extender Tray
901000079	92" Dual Extender Tray
901000080	94" Dual Extender Tray
901000081	96" Dual Extender Tray

Home
Site Map

Home
Models
Installation
Applications
FAQ
Contact Us

## FAQ

- How tall are the Joey Bed's side rails?**
- How wide is the tray?**
- How much does the tray weigh?**
- How long does assembly and installation take?**
- What should I use for the Joey Bed floor?**
- Do Joey Beds come assembled?**
- How far out do the trays come?**
- Will a Joey Bed fit in my vehicle?**
- Where can I buy a Joey Bed?**
- How do you ship the trays?**



### How tall are the Joey Bed's side rails?

The side rails on a Joey Bed Junior are 7.5" tall. A Senior tray's side walls are 12" tall. [top ↑](#)

### How wide is the tray?

The width of the tray is adjustable based on the space it is going into. The plywood that makes up the floor and the adjustable steel brackets determine the final width. [top ↑](#)

### How much does the tray weigh?

Joey Bed Junior tray kits weigh anywhere from 70 lbs for the 30" model to 155 for the 95". Senior trays range from 120 lbs to 230 lbs without plywood. [top ↑](#)

### How long does assembly and installation take?

This is obviously dependent on the installation crew and its abilities, but generally tray assembly takes about 45 minutes. Installation usually takes a half-an-hour. [top ↑](#)

### What should I use for the Joey Bed floor?

To maintain the load capacity rating of your tray, we recommend that you use at least ¾" AC grade plywood. [top ↑](#)

### Do Joey Beds come assembled?

Joey Beds can be shipped assembled for an additional charge. Shipping rates may also be affected by the assembled trays larger footprint on a truck. [top ↑](#)

### How far out do the trays come?

Joey Bed Juniors will extend roughly 75% out of the cargo space. Senior models pull out 67% of their length. Full extension trays pull out a distance of all but two inches of the tray depth. [top ↑](#)



- [Home](#)
- [Models](#)
- [Installation](#)
- [Applications](#)
- [FAQ](#)
- [Contact Us](#)

## Full Extension Trays

Joey Bed Full Extension trays are perfect for lighter loads or smaller compartments. Mounted on ball-bearing slides, Joey Bed Full Extension trays can carry up to 500 lbs. They are perfect for generators, batteries, and small grills.

**Note:** Tray lengths include a 2" allowance for the latch (e.g. 42" trays have a 40" surface and 2" latch).

- Steel Sidewalls
- All mild steel parts are powder coated to protect against rust
- 100% Full Extension
- Easy installation with illustrated guide
- All Full Extension units can ship UPS or FedEx
- Ships in Kit form or Pre-Assembled at customers' request




**Full Extension Tray Part Numbers**

Part Number	Description
9010000106	42" Full Extension Tray
9010000107	14" Full Extension Tray
9010000108	16" Full Extension Tray
9010000109	18" Full Extension Tray
9010000110	20" Full Extension Tray
9010000111	22" Full Extension Tray
9010000112	24" Full Extension Tray
9010000113	26" Full Extension Tray
9010000114	28" Full Extension Tray

**Full Extension Tray Part Numbers**

Part Number	Description
9010000115	30" Full Extension Tray
9010000116	32" Full Extension Tray
9010000117	34" Full Extension Tray
9010000118	36" Full Extension Tray
9010000119	38" Full Extension Tray
9010000120	40" Full Extension Tray
9010000200	44" Full Extension Tray
9010000121	50" Full Extension Tray
9010000122	62" Full Extension Tray

Home
Site Map



# JOEY BED

## CARGO TRAYS



Home
Models
Installation
Applications
FAQ
Contact Us

## Joey Bed Juniors

Our Junior trays are versatile and tough. They fit well in truck beds, vans, sport utilities, and RV compartments. Juniors come in fixed lengths available from 30" to 95", and they can carry up to 1,000 lbs of evenly distributed cargo.

- 11 gauge steel transport rails
- 7" - 16 gauge steel sidewalls
- Ten 1,300 lb precision sealed bearings
- Side thrust bearings to provide stable rollout on side slopes
- Easy operating spring latch with multiple locking positions
- Industrial powder coating
- Cantilevers: 30" - 77" = 75%; 83" & 95" = 67%
- Easy installation with illustrated guide
- UPS Shippable 83", and 95" Models LTL Shipping (F.O.B. Mishawaka, IN 46544)



### Joey Bed Junior Part Numbers

Part Number	Description
9010000062	77" Joey Bed Junior Tray
9010000063	71" Joey Bed Junior Tray
9010000064	66" Joey Bed Junior Tray
9010000065	63" Joey Bed Junior Tray
9010000066	58" Joey Bed Junior Tray
90100000128	54" Joey Bed Junior Tray
9010000067	48" Joey Bed Junior Tray
9010000068	42.5" Joey Bed Junior Tray
9010000069	30" Joey Bed Junior Tray
9010000070	83" Joey Bed Junior Tray
9010000129	92" Joey Bed Junior Tray
9010000071	95" Joey Bed Junior Tray
9010000072	63" Joey Bed Junior for the Avalanche or EXT

[Home](#)[Site Map](#)[Home](#)[Models](#)[Installation](#)[Applications](#)[FAQ](#)[Contact Us](#)

## Joey Bed Seniors

Joey Bed Seniors are up for the toughest of tasks. Available in fixed widths of 45 and 49 inches, they can be used in almost any truck strong enough to handle the load. Smooth rolling action makes it easy to access heavy cargo in the truck bed as the Senior will extend 66% out of the cargo area.

- 11 gauge steel transport rails Senior picture here.
- 12" - 18 gauge steel sidewalls
- Two 3,000 lb and eight 1,300 lb precision sealed bearings
- Side thrust bearings to provide stable rollout on side slopes
- Easy operating spring latch with multiple locking positions
- Industrial powder coating
- Cantilevers 67%
- Easy installation with illustrated guide
- LTL shipping (F.O.B. Mishawaka, IN 46544)



Joey Bed • 800.962.2681 • [customerservice@joeybed.com](mailto:customerservice@joeybed.com)  
© Joey Bed 2009



## Joey Bed Stacker Racks

If you need to lift a tray off the floor, our Stacker Racks are up to the challenge. Adjustable steel framing allows a Junior to be lifted up to 22" of the floor allowing the use of two drawers or additional flat storage space under the tray.

- Used to support a Second Drawer Unit

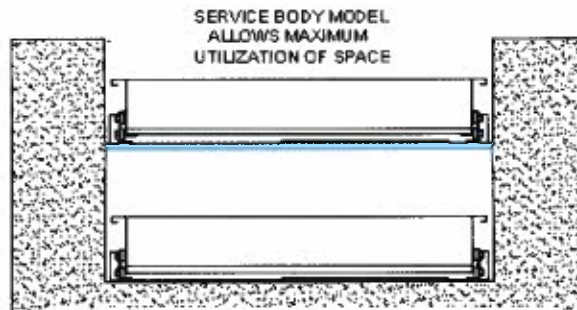
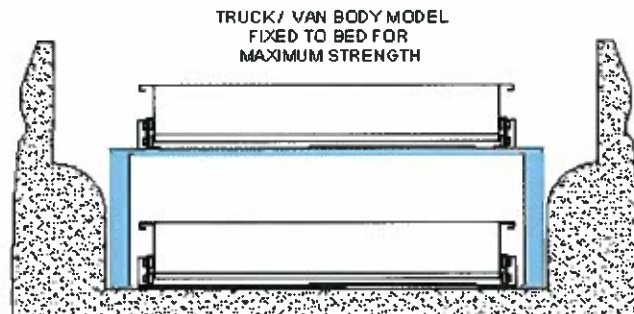
OR

- Can be used to raise a single drawer above the truck bed for under drawer storage

- Durable Industrial Powder Coating

- Adjustable to your application and specification

- Maximizes useable space in Service Bodies



### Joey Bed Stacker Part Numbers

Part Number	Description
9010000218	Joey Bed Stacker Rack





## Installation

Installing and removing your Joey Bed is an easy task. Joey Bed trays are simple bolt together items. To find out how easy assembly and installation of your Joey Bed is, please **click on the application guide for your model from the list below**. Of course, if you have any questions, please call us at 800-962-2881.

- [Joey Bed Jr](#)
- [Joey Bed Jr AV/EXT](#)
- [Joey Bed Sr](#)
- [Joey Bed Dual Extender](#)
- [Joey Bed Dual Extender - width of 48" or more](#)
- [Joey Bed Full Extension](#)
- [Joey Bed Stacker](#)

### Tools required:

To assemble and install your Joey Bed, we recommend you have the following tools and supplies available.

- 3/4" plywood (for deck & front wall) Grade AC-Exterior
- Phillips head screw driver
- Hack saw
- Electric drill
- File or rasp
- 13/32" drill bit (made for drilling steel)
- 1/4" drill bit for plywood
- 9/16" wrench or socket
- Slotted screw driver
- 7/16" wrench or socket
- Wood saw
- 3/8" wrench or socket
- Ratchet driver (if sockets are used)
- Retractable 8' tape measure

