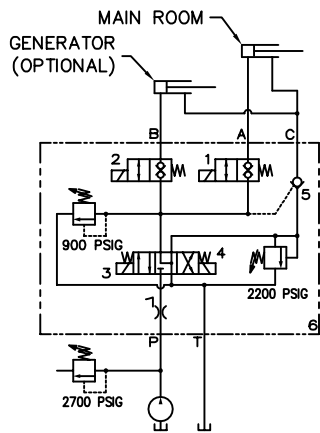


NOTES:

1. TORQUE ALL FITTINGS 16-19 FT LBS
2. SYSTEM MUST BE BLED & COMPLETELY FILLED WITH OIL



12	16-1046	A	WASHER, FLAT .75 SAE	2
11	15-1448	A	NUT, JAM .75-16 UNC	2
10	18-1051	A	PIN, CLEVIS .50 X 3.50	1
9	18-1029	A	PIN, COTTER .125 X 1.50	1
8	540129	C	CLY. HYDRAULIC 1.00	1
7	540128	C	RAIL ASSEMBLY RIGHT	1
6	07-1059	A	ELBOW 90 6 J 6 S	2
5	08-A134	B	HOSE F 6 J 134	1
4	07-1075	A	TEE-BRANCH	1
3	08-A106	B	HOSE F 6 J 106	1
2	07-1253	A	ADAPTER #4 SAE #6 J	1
1	500667	C	VALVE BLOCK ASSEMBLY	1
ITEM#	PART#	SIZE	DESCRIPTION:	QTY.