



Trouble Shooting Bunk Lift Control Box 1510000199 For In-wall Slim Rack Systems

© Copyright Power Gear Issued: January 2013

#82-S0530, Rev. OA

Read, understand and follow all instructions in Installation and Service Manual 3010002675 before starting. This trouble shooting is for the In-wall Slim Rack Bunk Lift with control box part number 1510000199.



WARNING

Always make sure that the bunk path is clear of people and objects before and during operation of the bunk lift. Always keep away from the bunk lift rails when bunk is being operated. The gear assembly may pinch or catch on loose clothing.

Table of Contents:

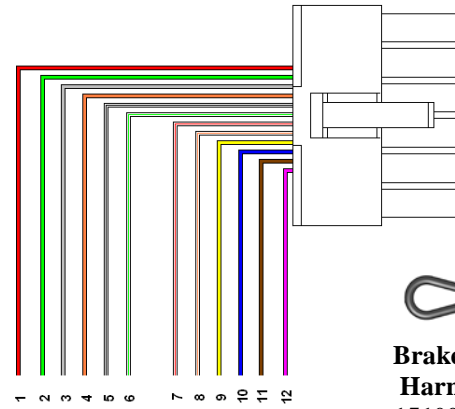
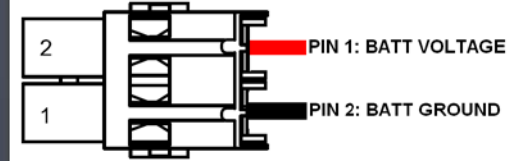
Page:

Introduction	1
Wiring diagram	2
Bunk lift will not move when touch pad is pressed	3
"A" 1 green LED and 2 red LED flashing on touch pad	4
"B" 1 green LED and 6 red LED flashing on touch pad	5
"C" 1 green LED and 4 red LED flashing on touch pad	6
"D" 2 green LED and 4 red LED flashing on touch pad	7
Engage park brake LED is flashing on touch pad	8
Low voltage LED is flashing on touch pad	9
Additional reference documents	10

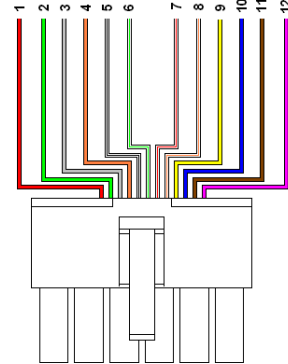


Wiring Diagram

Bunk Lift Control Box 1510000199

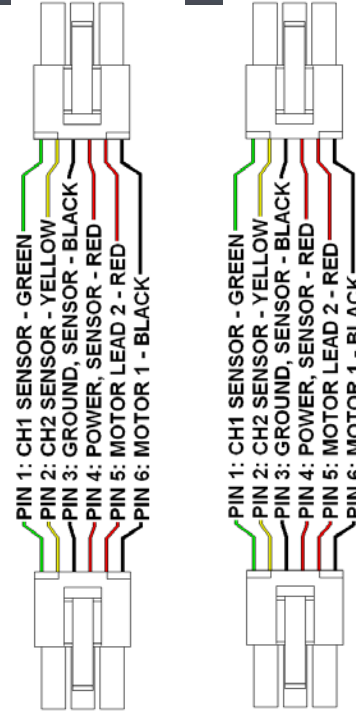
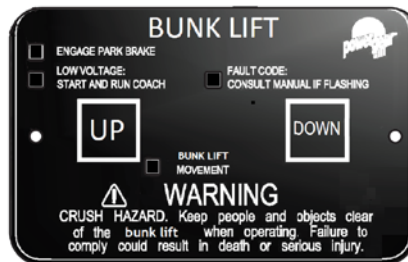


- 1 PIN 1: SWITCH POWER - RED
- 2 PIN 2: ROOM OR LOCK MOVEMENT LED - GREEN
- 3 PIN 3: FAULT CODE LED - GRAY
- 4 PIN 4: SERVICE/CALIBRATION - ORANGE
- 5 PIN 5: MOTOR 1 SWITCH - WHITE W/BLACK
- 6 PIN 6: MOTOR 2 SWITCH - WHITE W/GREEN
- 7 PIN 7: MOTOR 3 SWITCH - WHITE W/RED
- 8 PIN 8: MOTOR 4 SWITCH - WHITE W/ORANGE
- 9 PIN 9: DOWN SWITCH - YELLOW
- 10 PIN 10: UP SWITCH - BLUE
- 11 PIN 11: ENGAGE PARK BRAKE LED - BROWN
- 12 PIN 12: LOW VOLTAGE LED - PURPLE

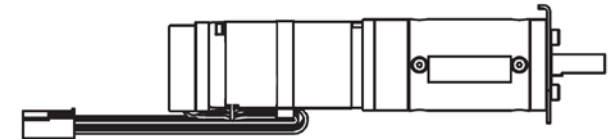


Control to Touch Pad Harness 1510000195

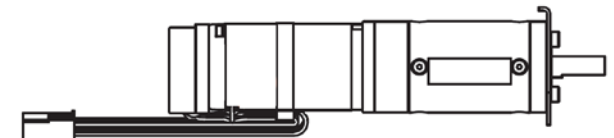
Touch Pad 1510000177

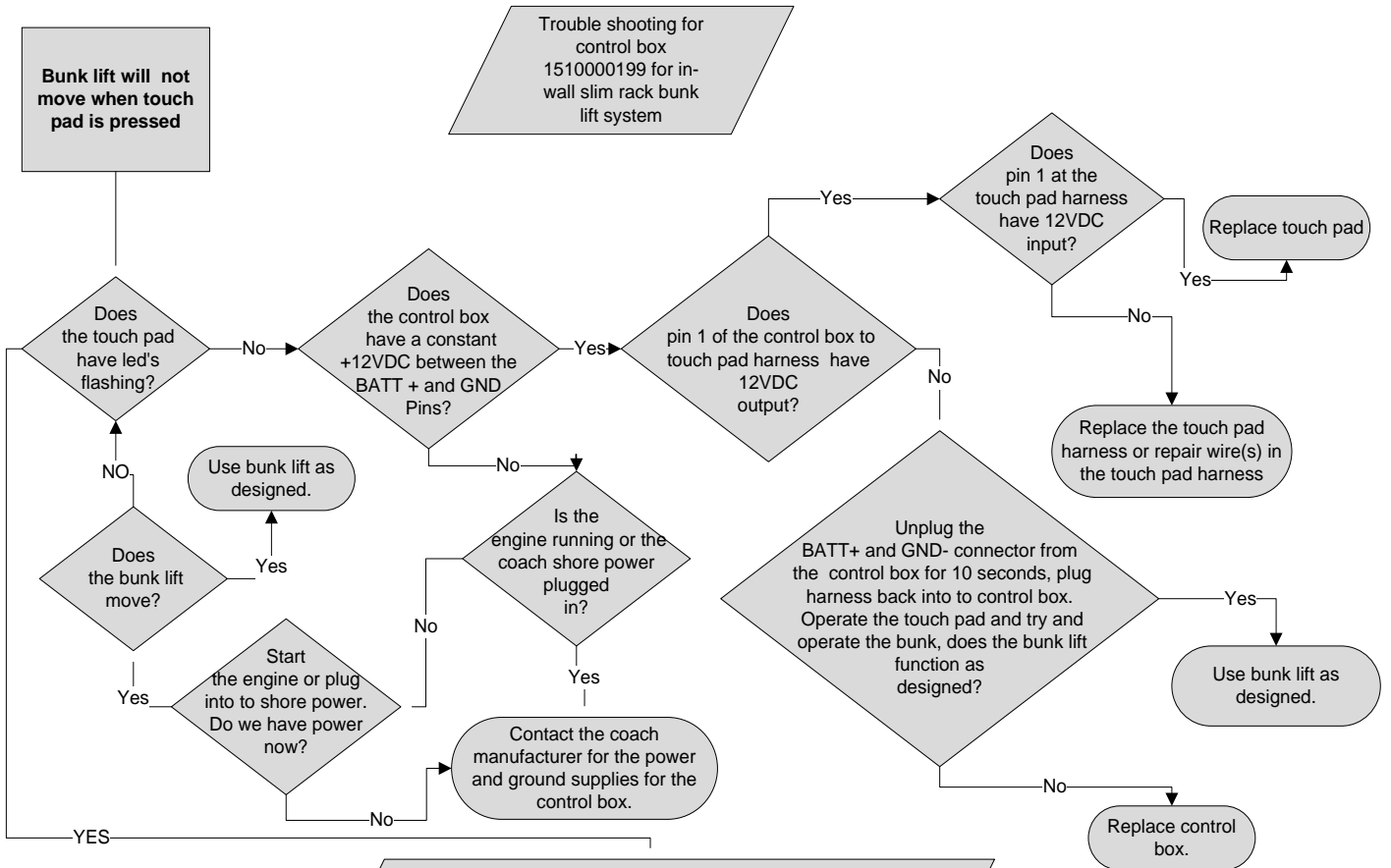


In-wall Motor 2

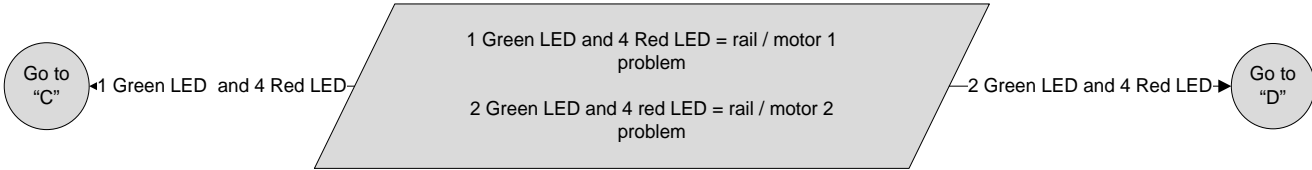
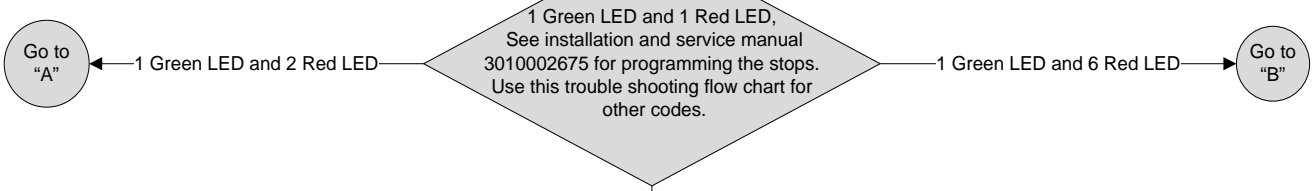


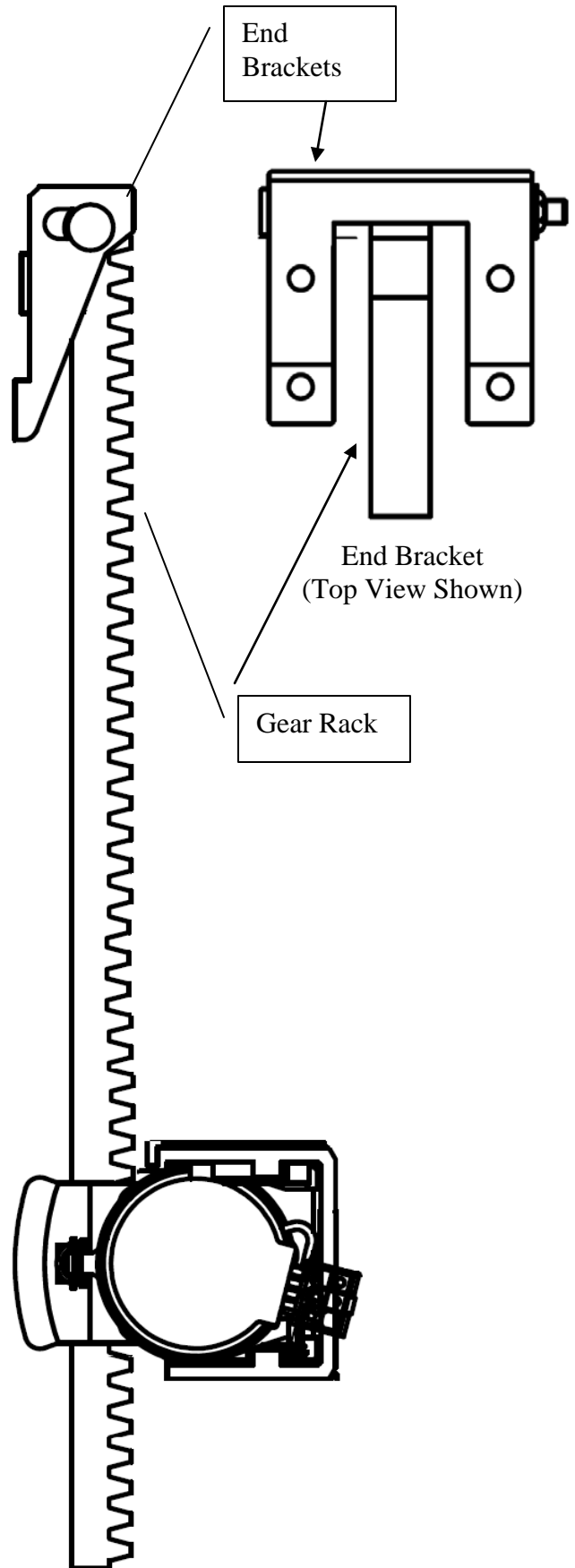
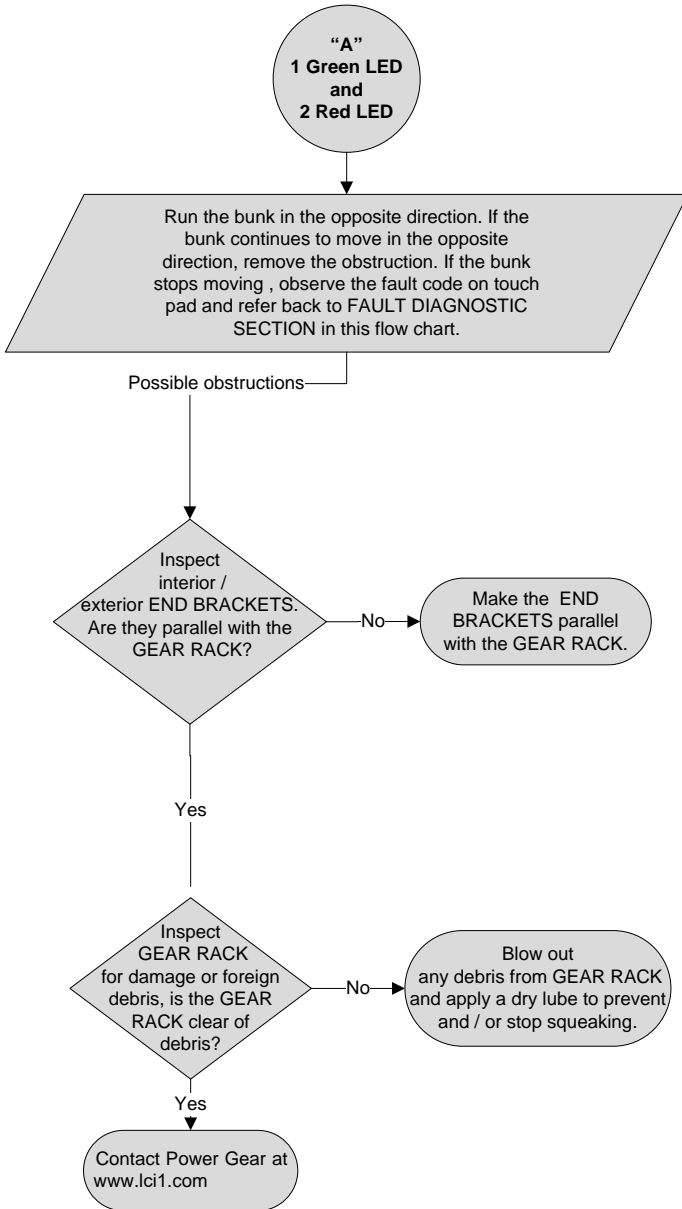
In-wall Motor 1

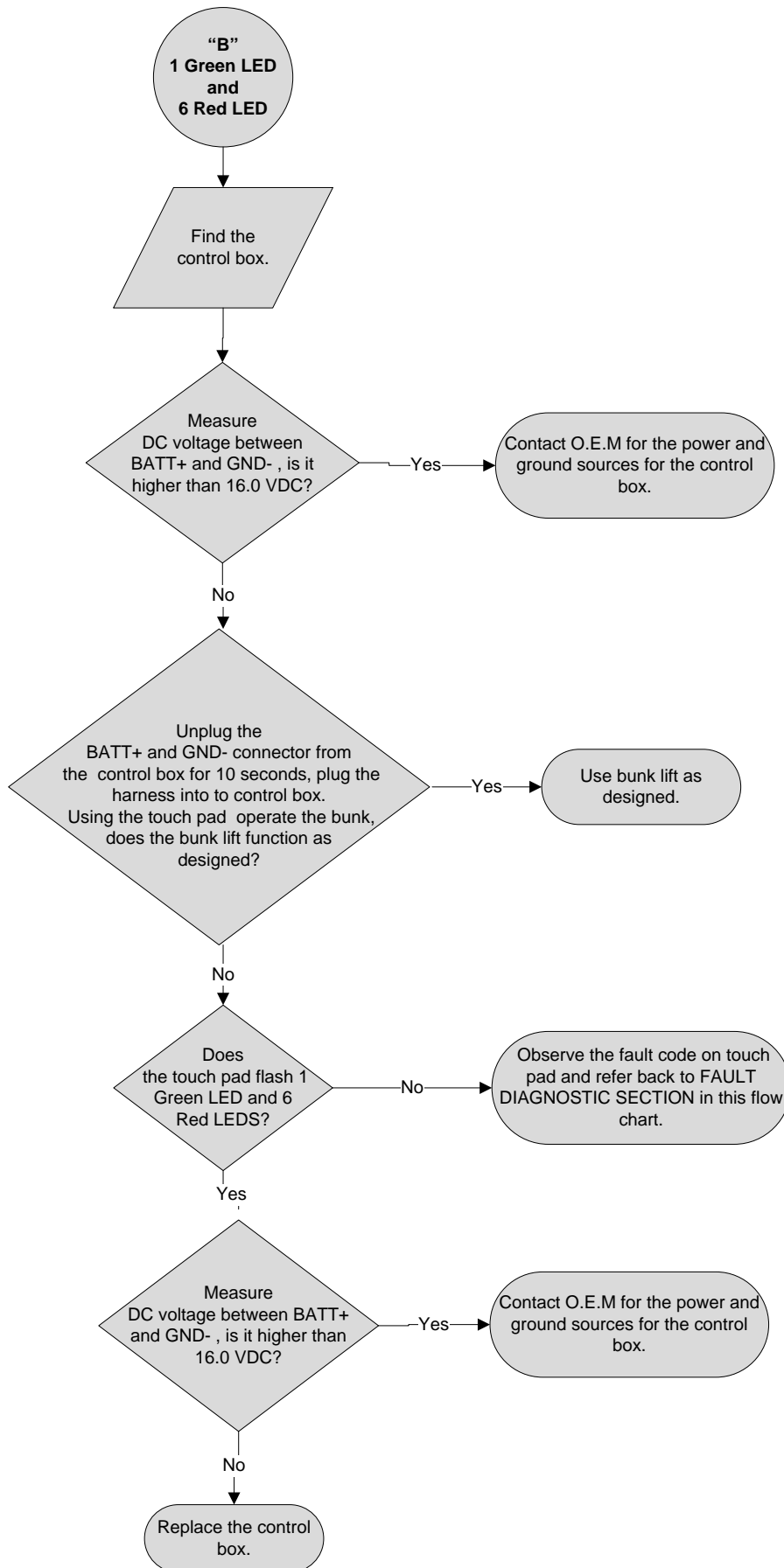


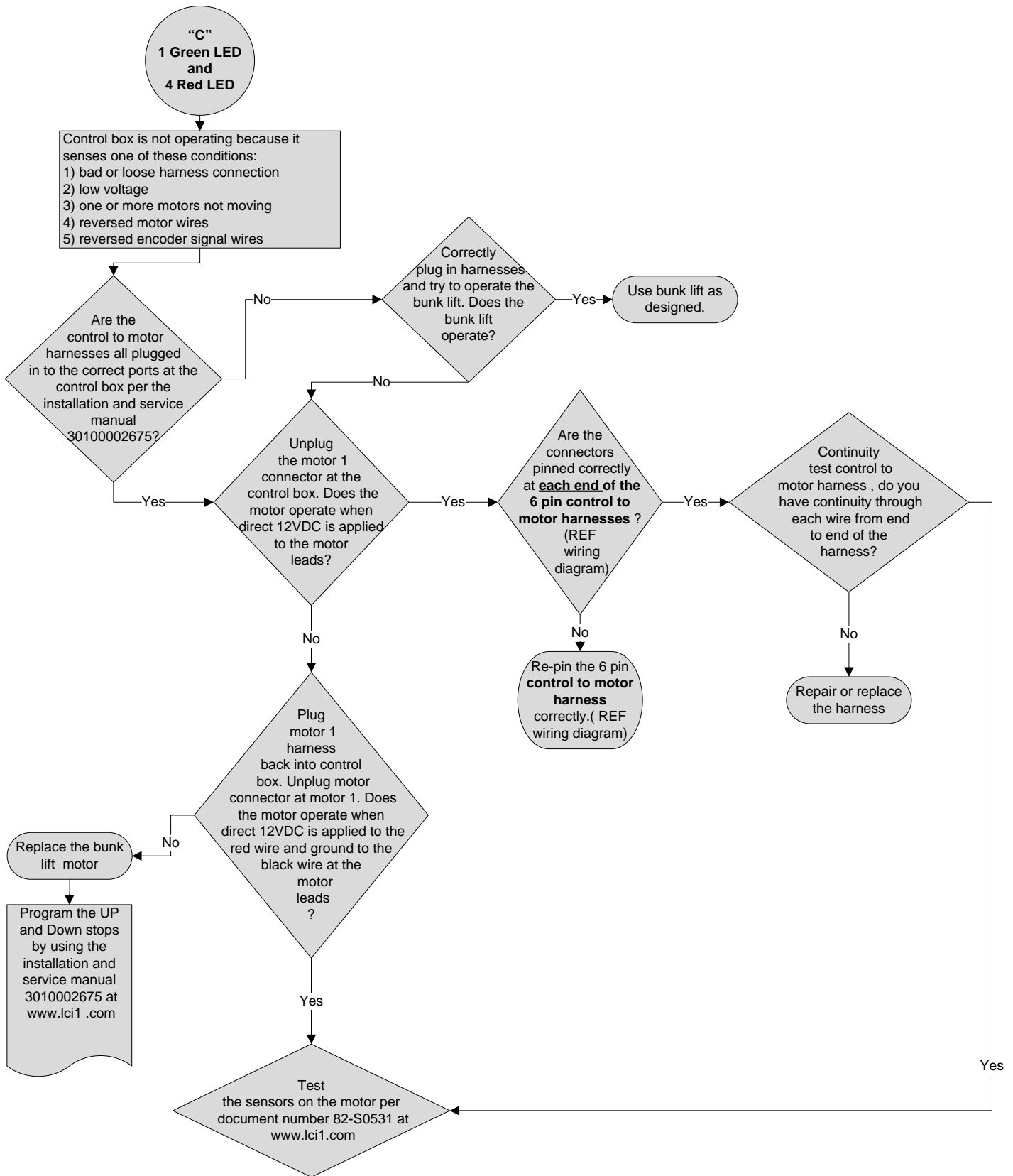


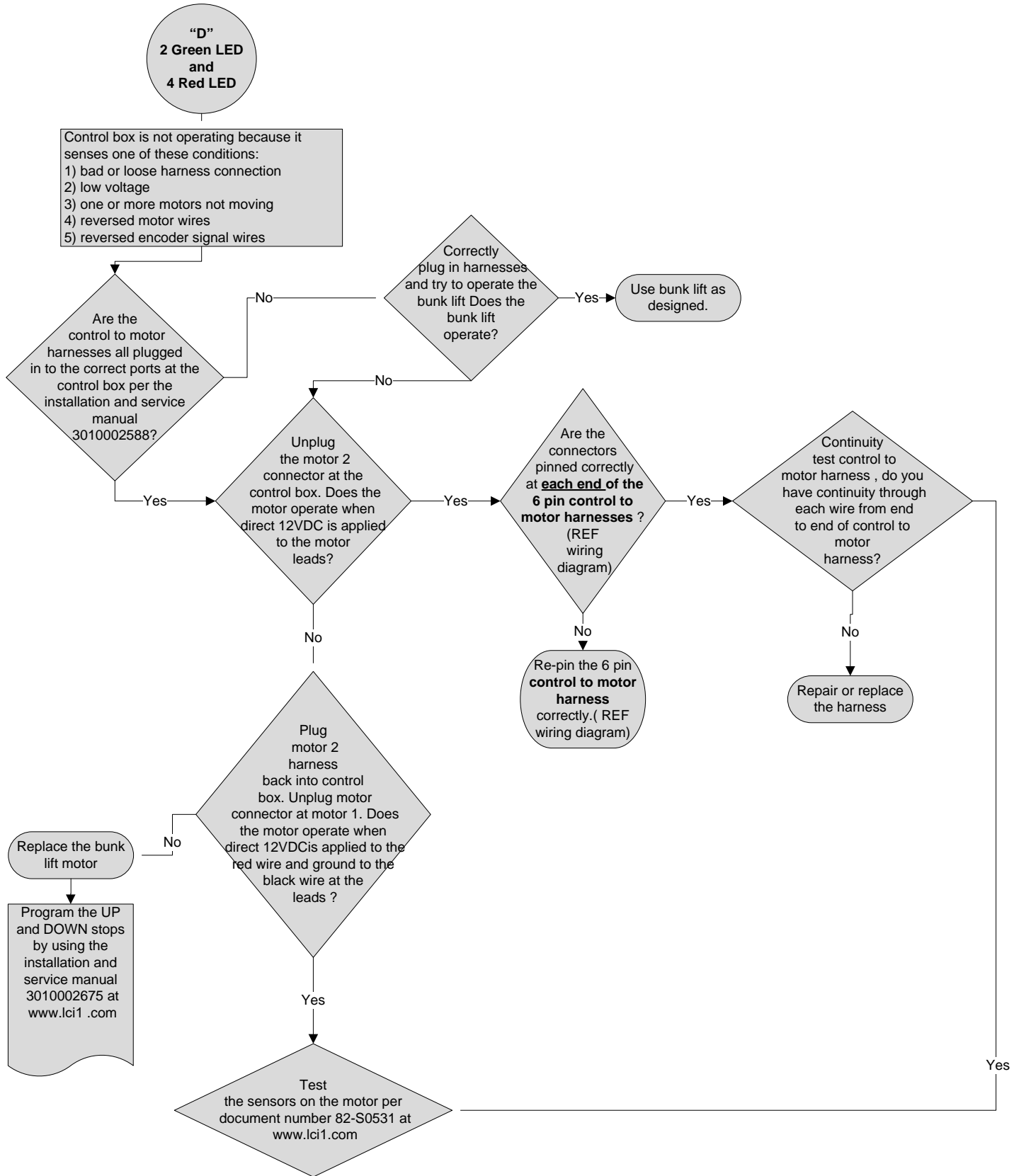
FAULT DIAGNOSTICS SECTION:
 The green LED indicates which rail / motor had the issue, the red LED indicates what the problem is. See the installation and service manual 3010002675 at www.lci1.com for the rail / motor location.

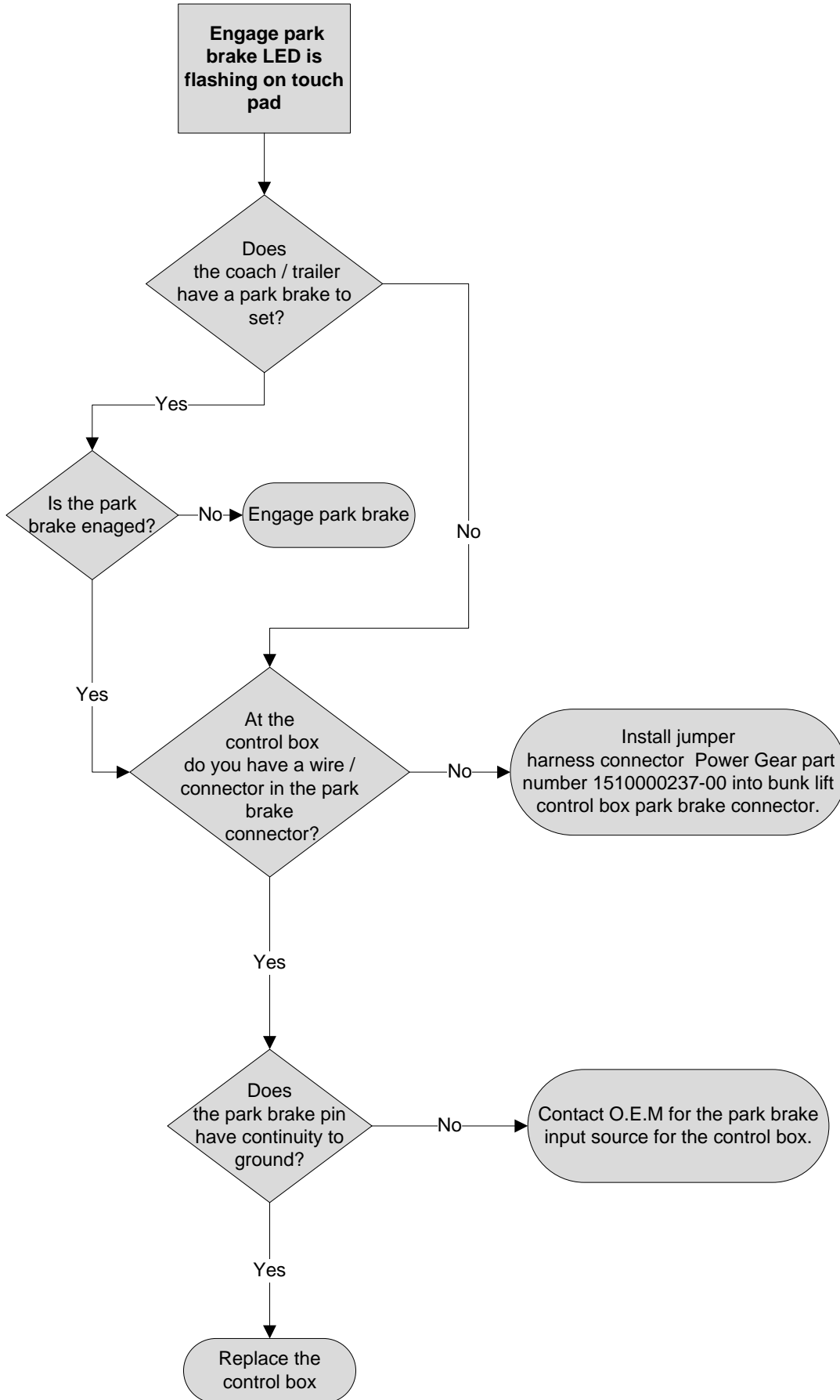


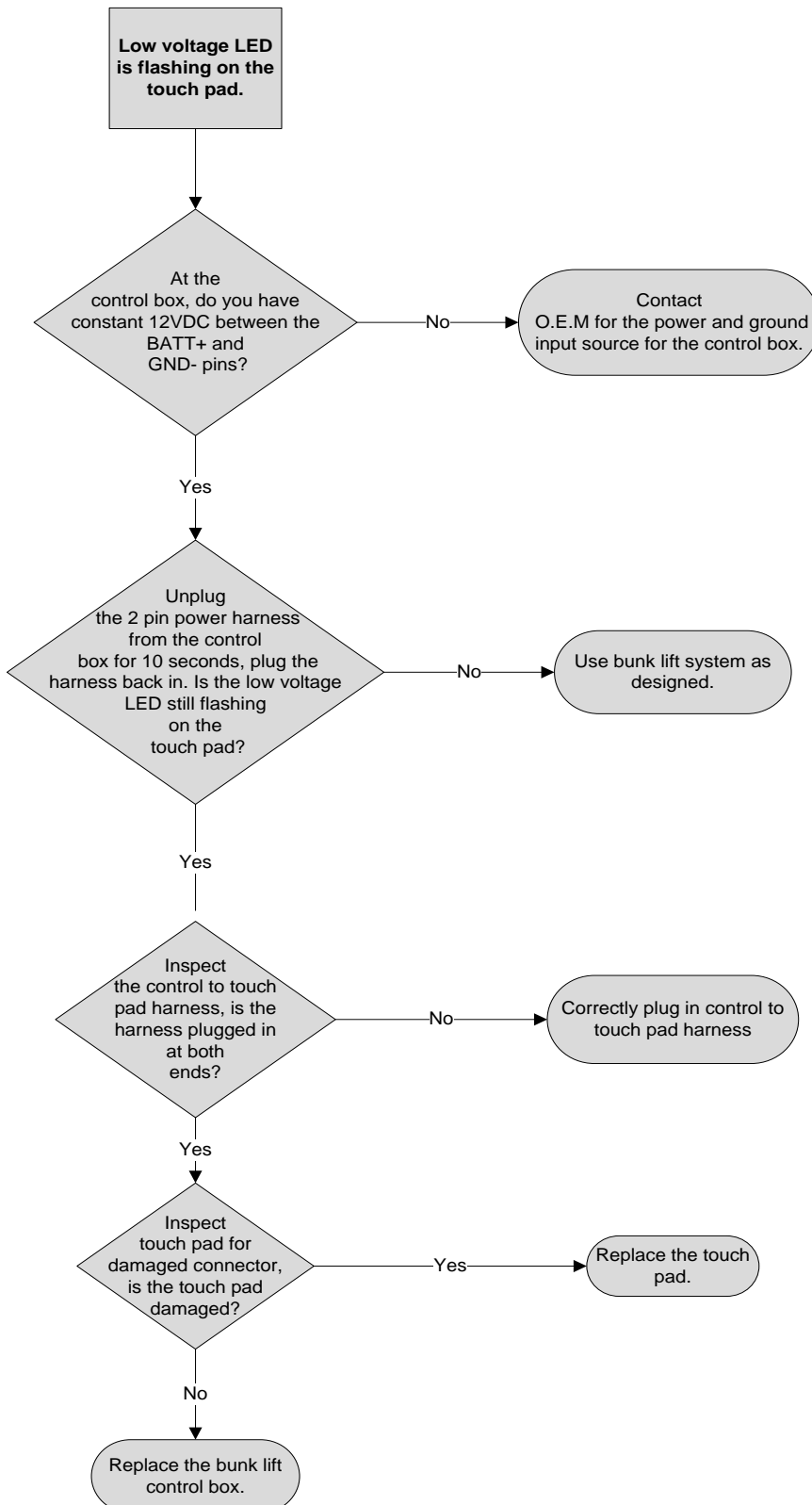












Additional Reference Documents Located At www.lci1.com.

<u>Document #</u>	<u>Description</u>
3010002678	Owner's manual slim rack in-wall bunk lift system control box part number 1510000199
3010002675	Installation & service manual slim rack in-wall bunk lift system control box part number 1510000199
82-S0531	Encoder test 1 Dual planetary gear motor sync with control box 1510000199
82-S0532	Encoder test 2 Dual planetary gear motor sync with control box 1510000199