



# Tip Sheet

## Troubleshooting Information for RV Slideouts

© PowerGear 03/06 #3010000067, Rev. 0A

### ⚠ WARNING

• Call Lippert Components customer service at 574-537-8900 before use. Improper operation of the emergency retract module (ERM) may result in damage to your slide-out room.

• Do not use your room slide-out after using the emergency retract module (ERM) to retract your slide-out. Take your motor home to the nearest trained dealer for service.

• Failure to follow these steps can result in damage to your slide-out room.

• This is a two-person operation.

### ⚠ WARNING

Keep the 4 pin sensor leads connected to the control.



## Emergency Retract Module (ERM) Instructions

Below is a procedure to retract your full wall slide-out room in the event of a non-functioning control by utilizing the Emergency Retract Module (ERM). See figure 1. Read and understand instructions before using ERM.

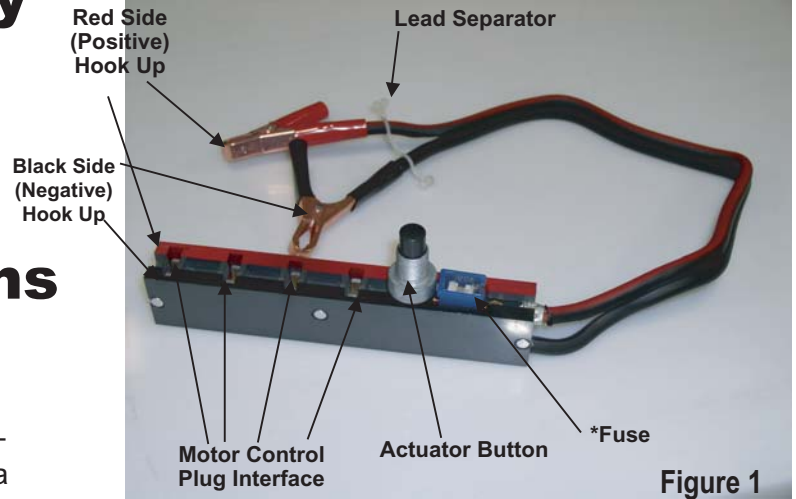
▶ **Note:** Do not attempt this alone. You will need another individual to help as an observer.

▶ **Note:** Before using the ERM, make sure the coach is running and all safety devices are active or employed (park brake, ignition, etc.), if applicable. Refer to your owner's manual for proper room slide-out operation steps.

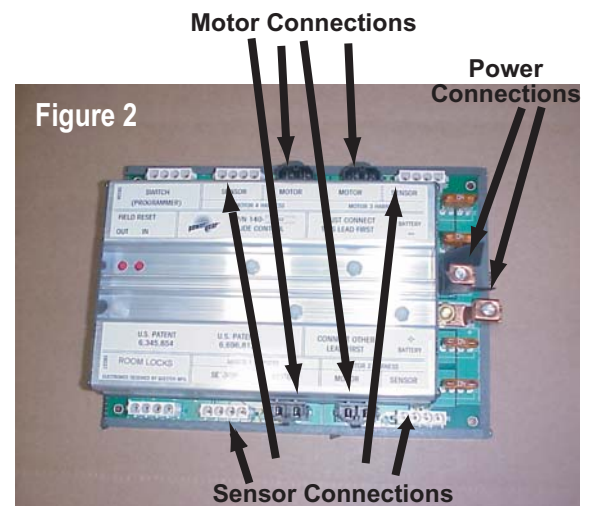
On the right is a picture of the Full wall control module. See figure 2.

1) Locate the full wall control module on your Motor home. See figure 3.

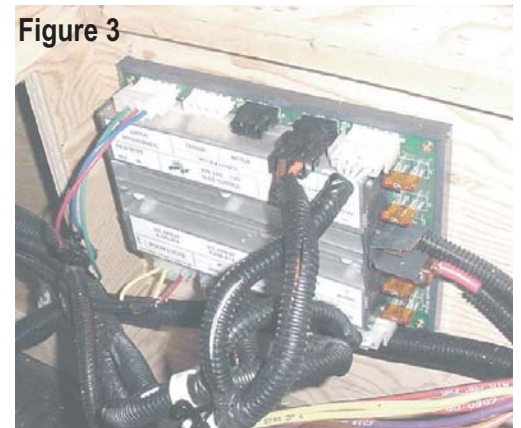
### Emergency Retract Module



\* Note:  
100 Amp fuse is not replaceable. If fuse is blown you will need to purchase a new Emergency Retract Module. Power Gear P/N 1010000060



### Full Wall Control Module



**! WARNING**

Do NOT plug all motor connectors into ERM at this time.

\* Use "Log For Wire Lead Colors" on page 4 to ensure motor lead wiring is correctly reconnected to module.

**! WARNING**

Use Caution when attaching to terminals so as not to short connections.

2) Test one motor at a time by removing the 2-pin motor connector from the control and plug it into the ERM. See figure 4.

**Remove (1) 2 pin motor connector at a time and plug into the ERM\***

3) Attach the emergency control retract module power leads to the full wall control power terminals or a separate fully charged battery. Red (+) to red (+) and black (-) to black (-). See figure 5.

4) To ensure the motor is plugged into the emergency retract module correctly, briefly press the button and note direction of motor rotation and rail actuation. See figure 6.

▶ **Note:** DO NOT run for more than 1 second as this may cause your room to get out of alignment. This is where you will need an observer. If the rail or motor is moving out, reverse the motor connection by unplugging the connector, rotating 180° and plugging back into the emergency retract module.

▶ **Note:** You will need to have the motor home running to ensure ample voltage for the motors.

**Briefly press button to note rail actuation**

**Keep sensor connector connected**

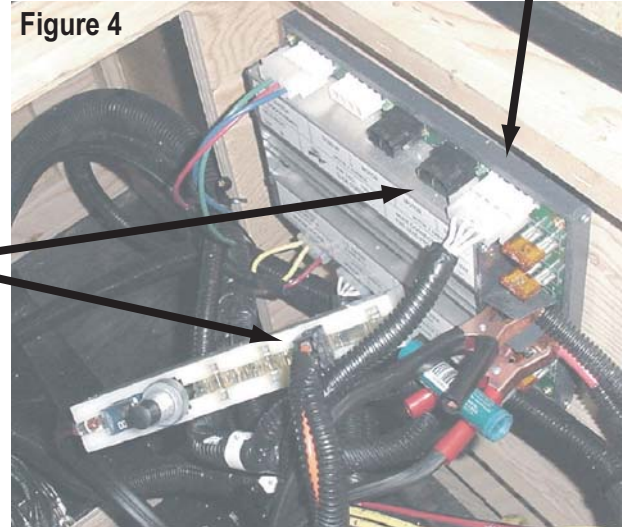


Figure 4

**Connect ERM clips to power/battery leads.**

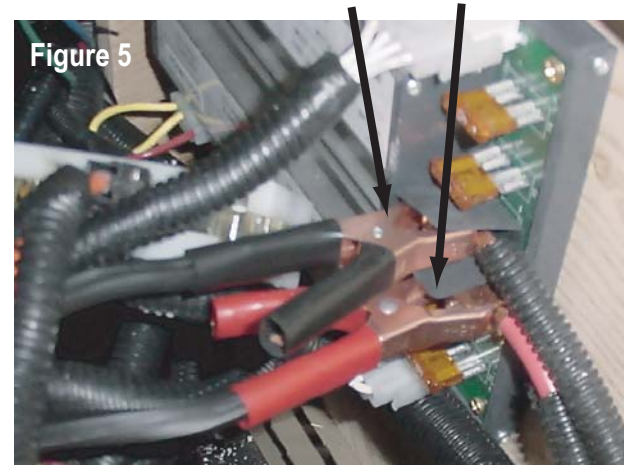


Figure 5

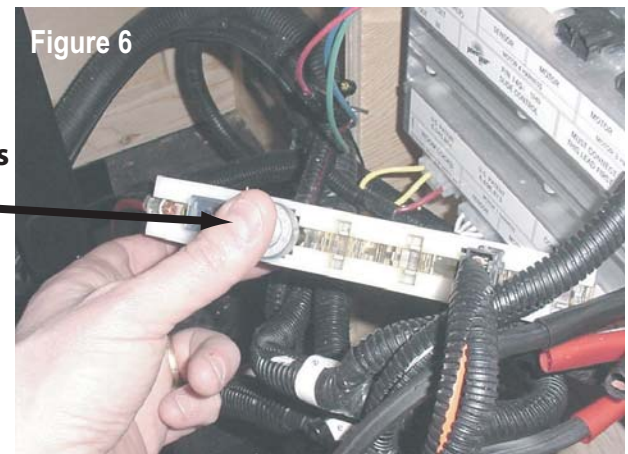


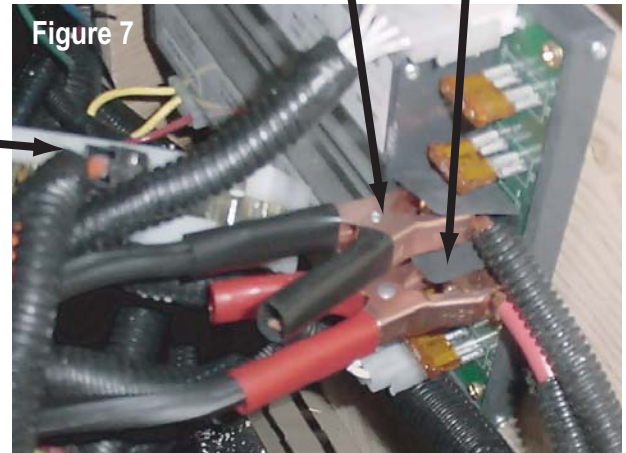
Figure 6

**Important**

5) Note wire color connection to polarity on the ERM and record in the log section on the page 4 of this instruction manual or mark the leads accordingly with tape as you verify the motor rotation and rail actuation for each motor.

**First, disconnect the power clips from the power source**

**Second, disconnect the motor connector from the ERM.**

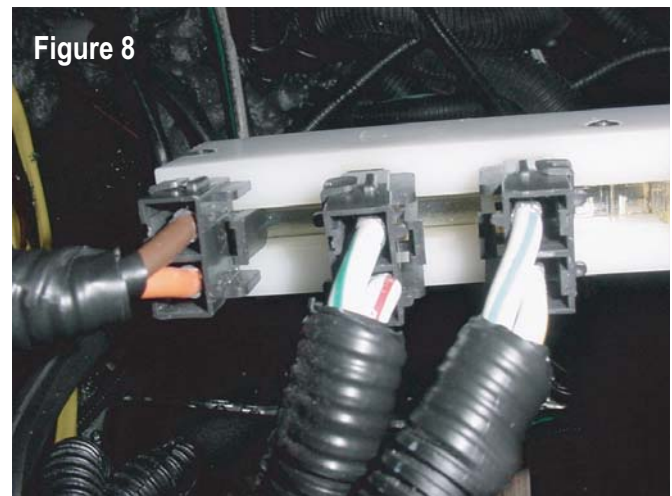


6) Unplug the ERM power clips from the power source being careful not to short out the connections. See figure 7.

7) Unplug the motor connector from the ERM. See figure 7.

8) Repeat the above steps 2 through 7 for all motors to ensure proper connection to the ERM to retract each rail.

9) Once all proper motor connections to the ERM for retraction of the rails has been verified, plug in all motor connectors with the proper wire polarity to the ERM (refer back to your log you created in step 5 earlier) then reconnect the power clips. See figure 8.

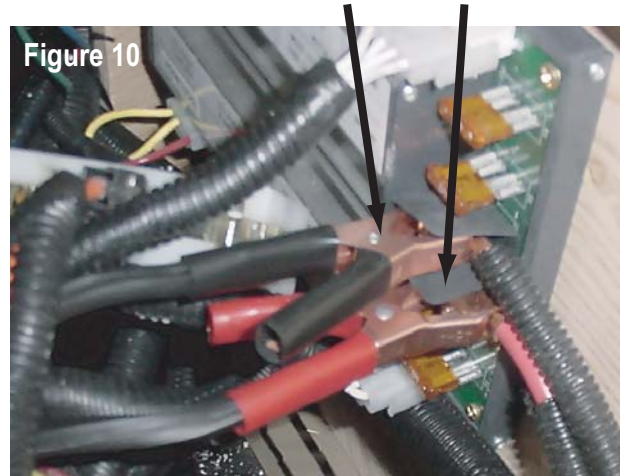


10) Once you and your observer have verified there are no obstructions in the way of the slide-out room, depress and hold the ERM button to fully retract the room. See figure 9.



11) Once the room is fully retracted, disconnect the ERM power clips from the full wall control power terminals. See figure 10.

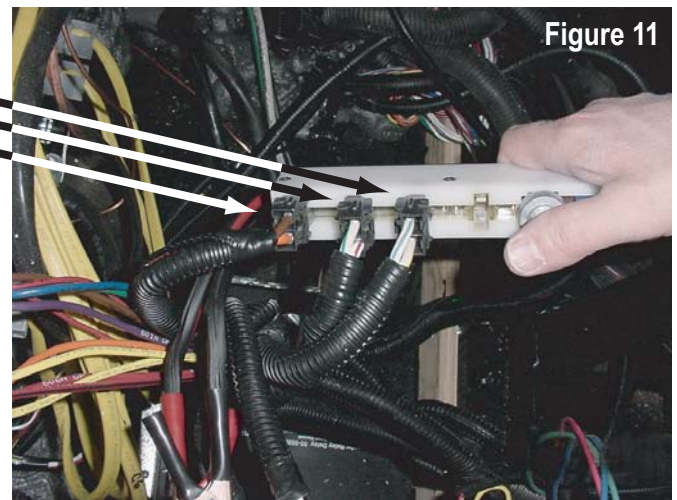
**Disconnect the power clips from the power source**



**NOTE:** Motor connectors must be plugged into correct location on control for room to operate correctly in the future.

**Disconnect the motor connectors from the ERM**

12) Disconnect the motor connectors from the ERM. See figure 11.

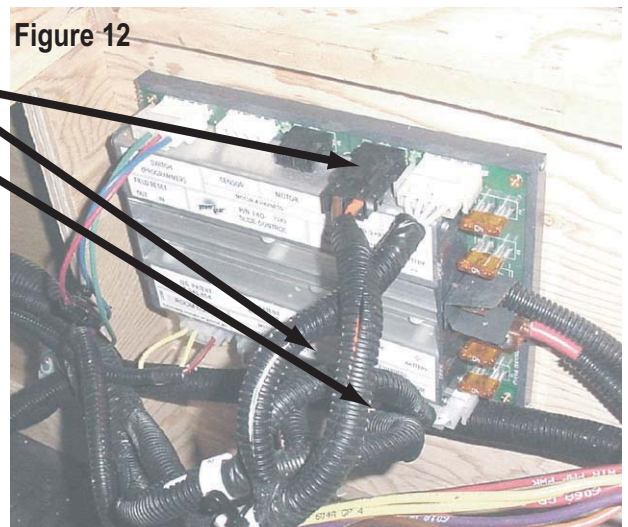


**LOG FOR WIRE LEAD COLORS**

	POSITIVE	NEGATIVE
MOTOR 1		
MOTOR 2		
MOTOR 3		
MOTOR 4		

**Plug motor connectors back into control**

13) Plug all motor connectors back into correct location on the full wall controller. Refer to the above log you created for proper location. See figure 12.



14) End of override procedure. Take motorhome to a certified dealer for repair.

