



Troubleshooting Slide-Out Control Boxes 151000011 and 151000013

Read, understand and follow these instructions.

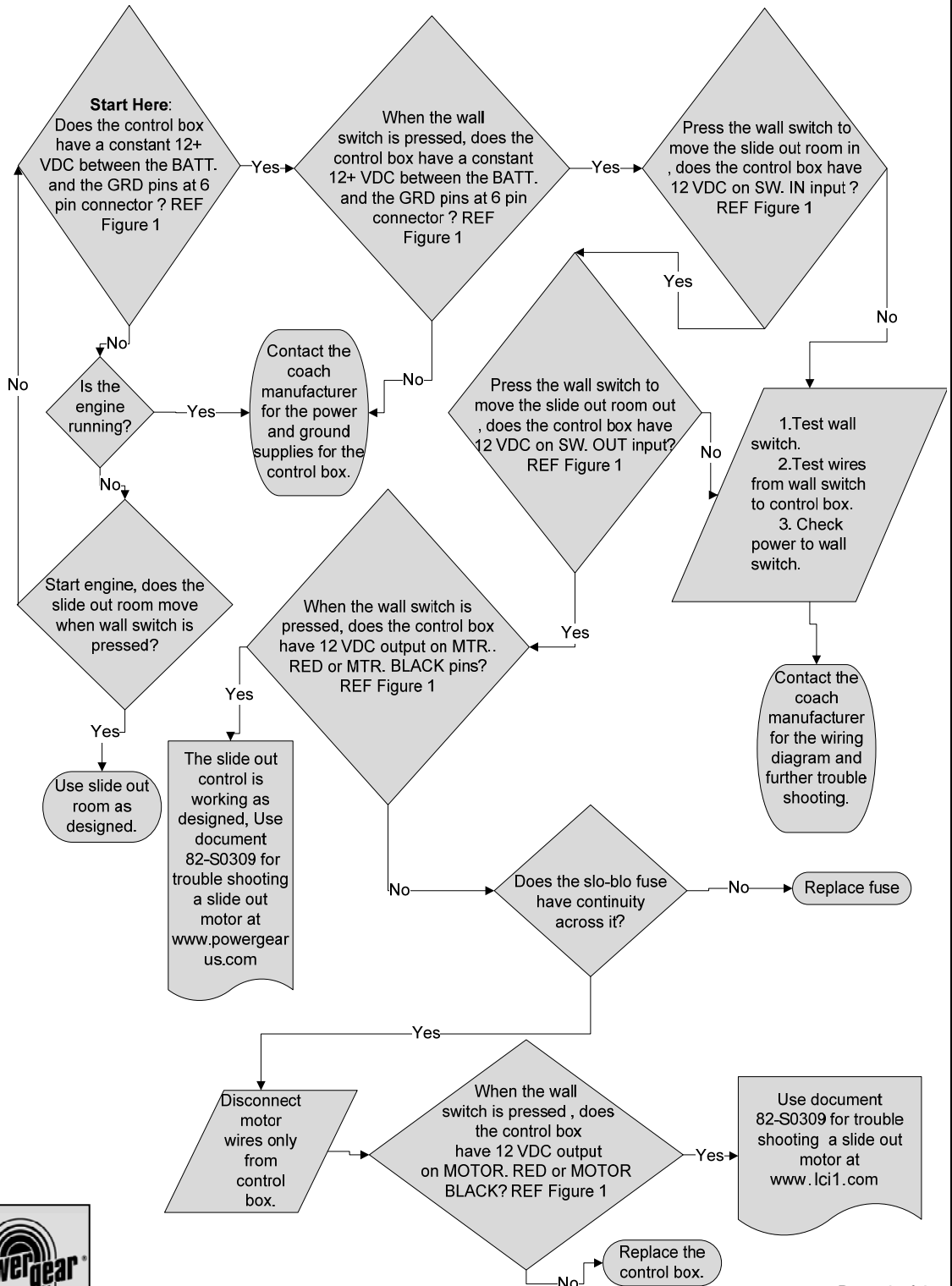
© Copyright Power Gear Issued: August 2012

#82-S0526, Rev. 0A

The 151000011 and 151000013 have the same basic control logic, EXCEPT 151000013 will allow a higher motor amp draw (for a short period of time) when retracting the slide out room up the slide out ramp (normally flush floor models). Contact Lippert Components at www.lci1.com.

WARNING

Always make sure that the slide out room path is clear of people and objects before and during operation of the slide out room. Always keep away from the slide out rails when the room is being operated. The gear assembly may pinch or catch on loose clothing.



151000011 and 151000013 6 Pin Connector

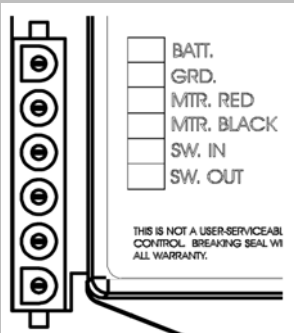


Figure 1

NOTE

Labor Time

Diagnostic time =0.25
Repair time =0.50
Total time =0.75

