



Troubleshooting Slide-Out Control Box 140-1163

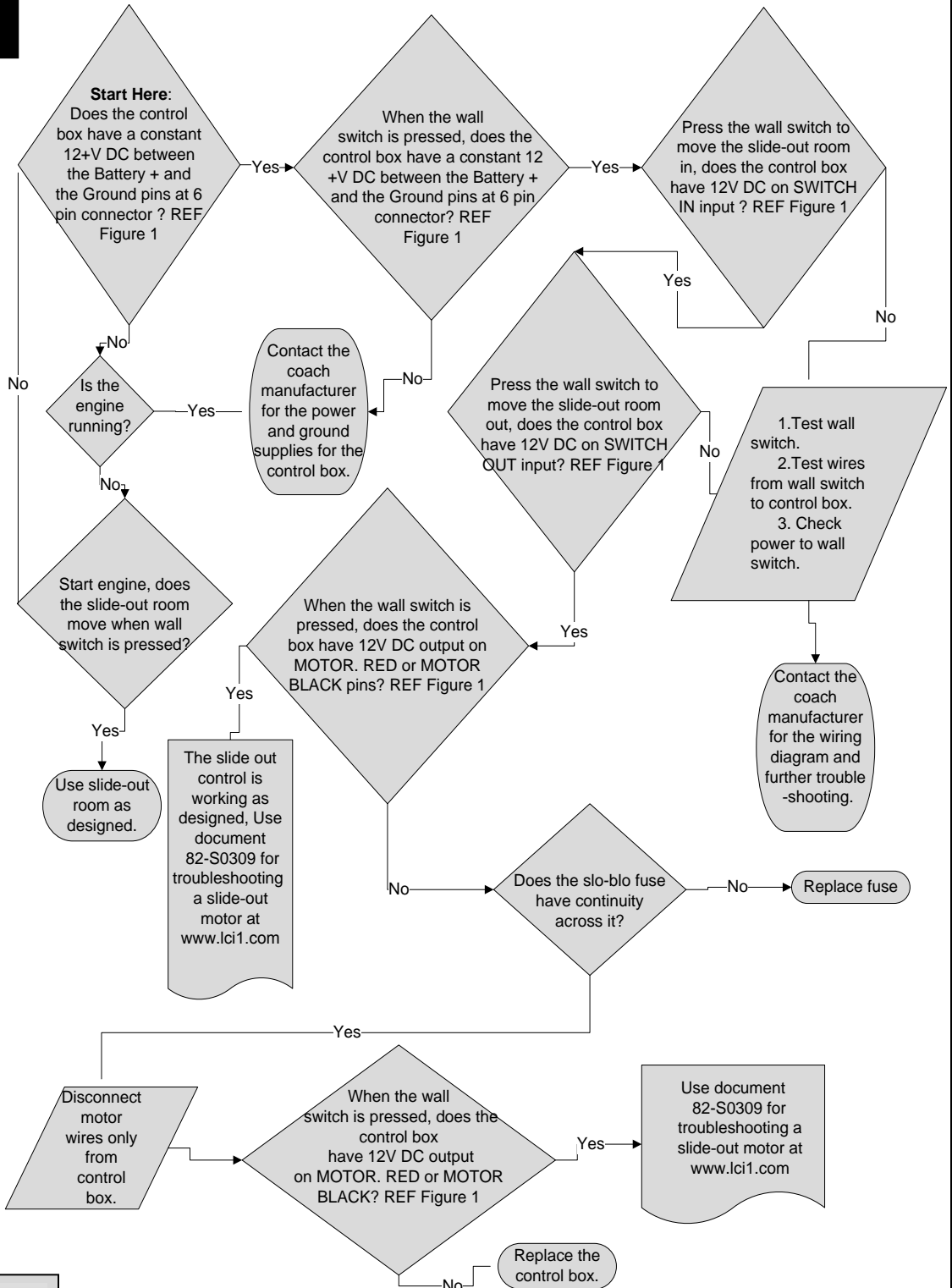
© Copyright Power Gear Issued: August 2012

#82-S0527, Rev. 0A

Read, understand and follow these instructions.

! WARNING

Always make sure that the slide out room path is clear of people and objects before and during operation of the slide out room. Always keep away from the slide out rails when the room is being operated. The gear assembly may pinch or catch on loose clothing.



140-1163 6 Pin Connector

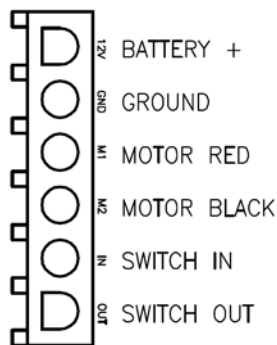


Figure 1

! NOTE

Labor Time

Diagnostic time =0.25
Repair time =0.50
Total time =0.75

