

FRAMES AND CHASSIS

Fig. 1 - Standard

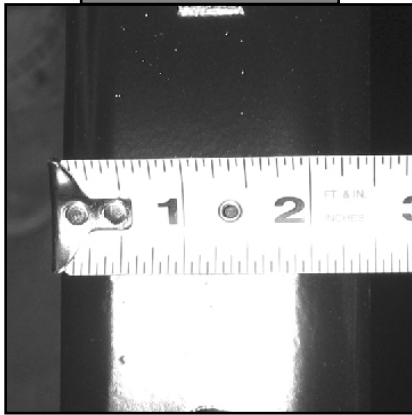


Fig. 2 - 2 Square

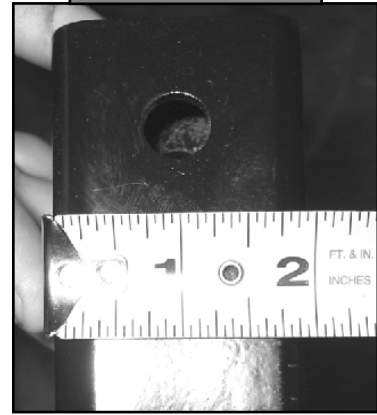
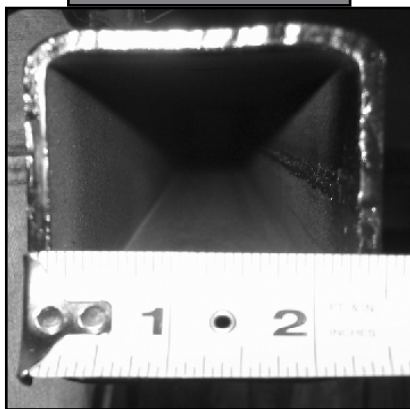
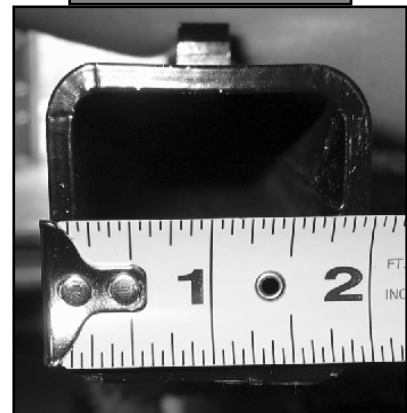


Fig. 3 - Inner Tube



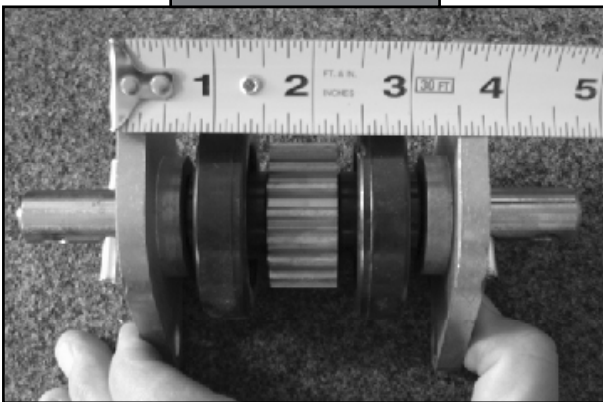
2 1/2" x 2 1/2" - Part #[143707](#)

Fig. 4 - Inner Tube



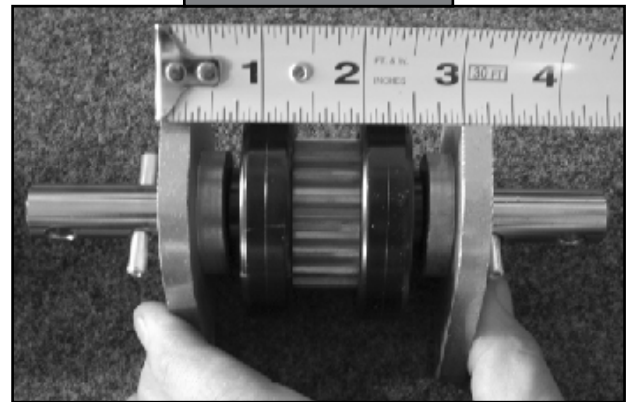
2" x 2" - Part #[145736](#)

Fig. 5 - Gear Pack



Gear pack 3 3/4" outside distance of
Bearing plates - Part #122837

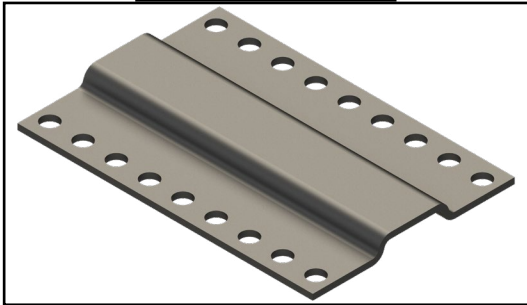
Fig. 6 - Gear Pack



Gear pack 3 1/4" outside distance of
Bearing plates - Part #154233

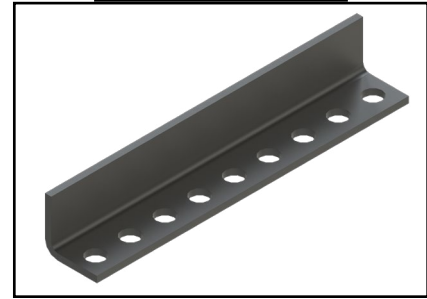
FRAMES AND CHASSIS

Fig. 7 - Standard



Actuator Mounting Plate (LONG) Part #[105965](#)

Fig. 8 - 2 Square



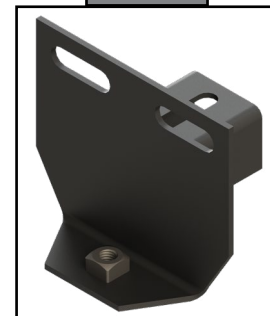
Actuator Mounting Angle Part #[158814](#)

Fig. 9



Adjustable Head Assembly Part #125760

Fig. 10



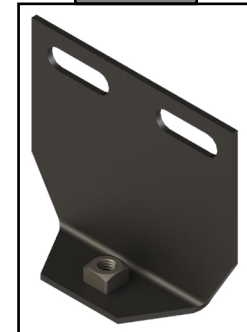
Adjustable Head Assembly Part #141792

Fig. 11



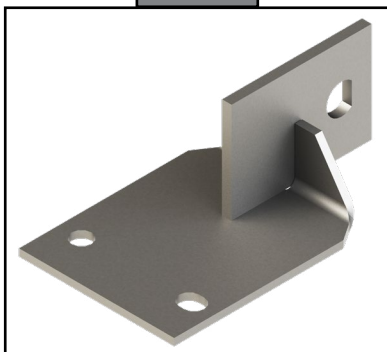
Fixed Head Assembly Part #125761

Fig. 12



Weld-on Head Part #159624

Fig. 13



Drive Bracket Assembly Part #[122852](#)

Fig. 14



Weld-on Drive Bracket Part #[134707](#)

As a supplier of components to the RV industry, safety, education and customer satisfaction are our primary concerns. Should you have any questions, please do not hesitate to contact us at (574) 537-8900 or by email at customerservice@lci1.com. Self-help tips, technical documents, product videos and a training class schedule are available at www.lci1.com or by downloading the MyLCI app.