



Troubleshooting Slide Out Control Box 1510000199 For In-wall Slim Rack Systems

© Copyright Power Gear Issued: January 2013

#82-S0518, Rev. OA

Read, understand and follow all instructions in Installation and Service Manual 3010002588 before starting. This troubleshooting is for the in-wall Slim Rack Slide Out System with control box part number 1510000199.



WARNING

Always make sure that the room path is clear of people and objects before and during operation of the slide out room. Always keep away from the slide out rails when room is being operated. The gear assembly may pinch or catch on loose clothing.

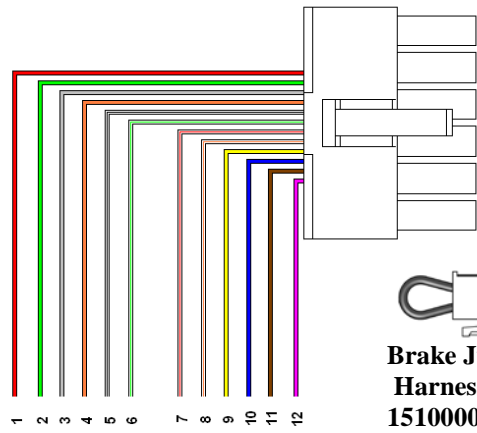
Table of Contents:

Page:

Introduction	1
Wiring diagram	2
Slide-out room will not move when touch pad is pressed	3
"A" 1 green LED and 2 red LED flashing on touch pad	4
"B" 1 green LED and 6 red LED flashing on touch pad	5
"C" 1 green LED and 4 red LED flashing on touch pad	6
"D" 2 green LED and 4 red LED flashing on touch pad	7
Engage park brake LED is flashing on touch pad	8
Low voltage LED is flashing on touch pad	9
Additional reference documents	10

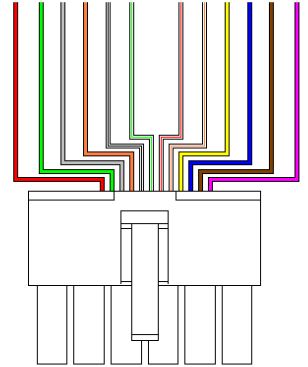


Wiring Diagram

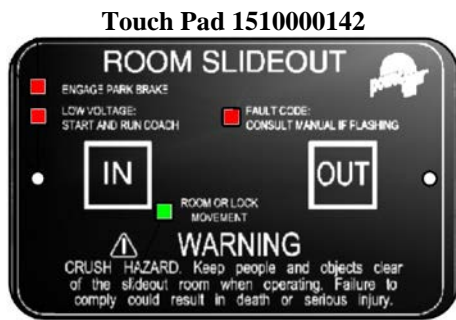


**Brake Jumper
Harness
151000237-00**

- 1 PIN 1: SWITCH POWER - RED
- 2 PIN 2: ROOM OR LOCK MOVEMENT LED - GREEN
- 3 PIN 3: FAULT CODE LED - GRAY
- 4 PIN 4: SERVICE/CALIBRATION - ORANGE
- 5 PIN 5: MOTOR 1 SWITCH - WHITE w/BLACK
- 6 PIN 6: MOTOR 2 SWITCH - WHITE w/GREEN
- 7 PIN 7: MOTOR 3 SWITCH - WHITE w/RED
- 8 PIN 8: MOTOR 4 SWITCH - WHITE w/ORANGE
- 9 PIN 9: EXTEND SWITCH - YELLOW
- 10 PIN 10: RETRACT SWITCH - BLUE
- 11 PIN 11: ENGAGE PARK BRAKE LED - BROWN
- 12 PIN 12: LOW VOLTAGE LED - PURPLE

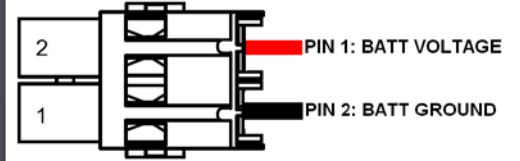


**Control to Touch Pad
Harness 1510000195**

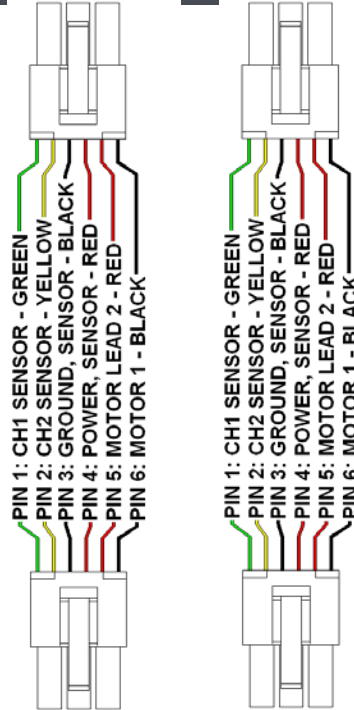


Touch Pad 1510000142

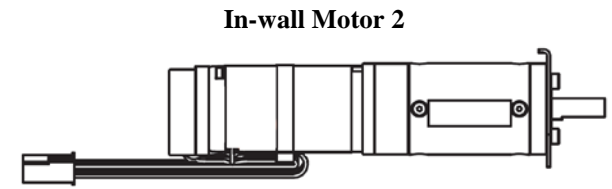
Slide Out Control Box 1510000199



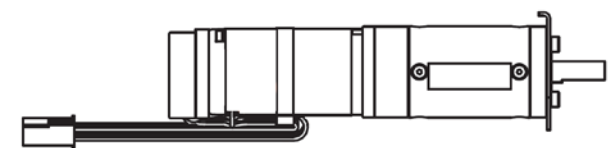
Power Harness 1510000233



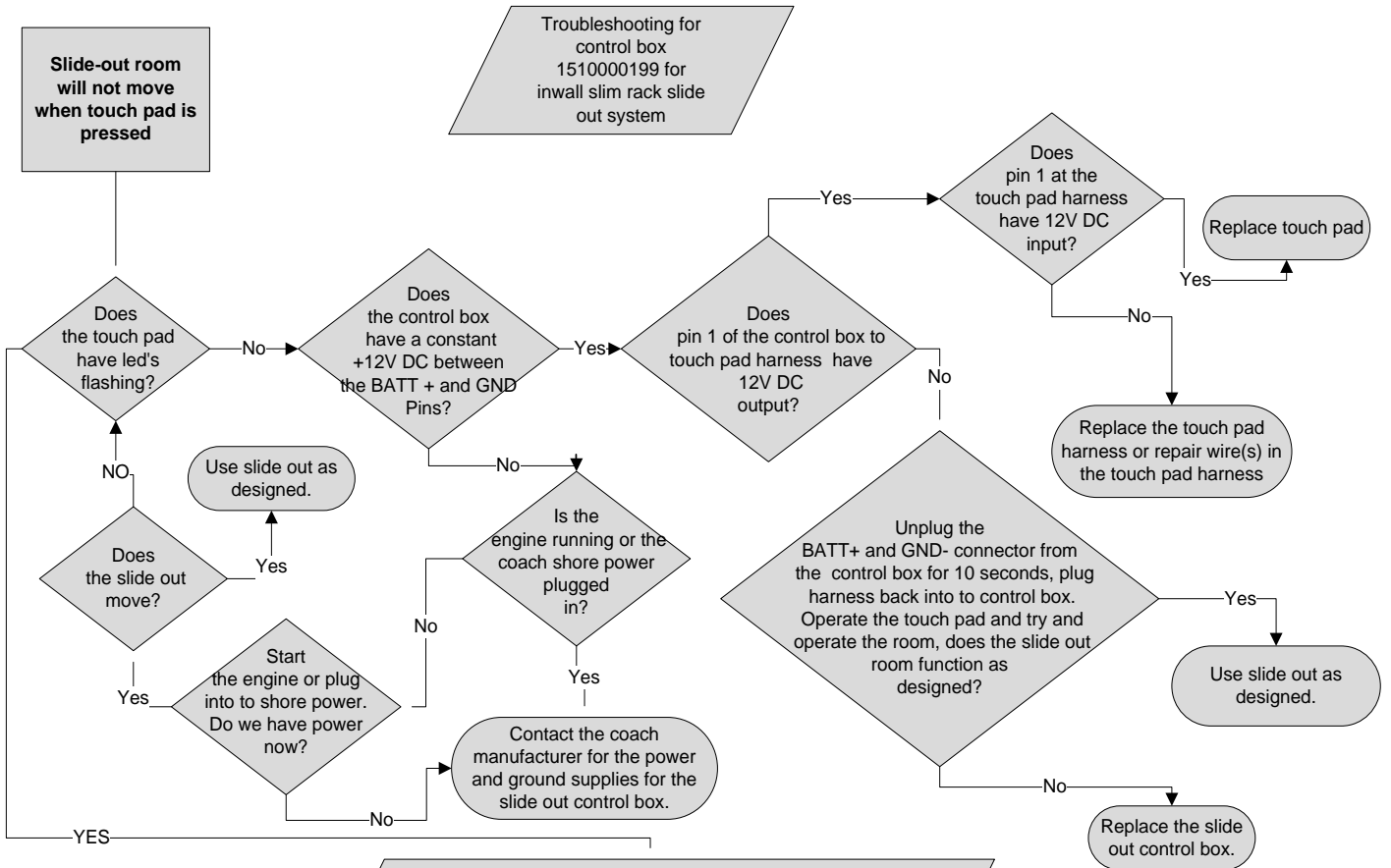
**Control to Motor Harnesses
1510000194**



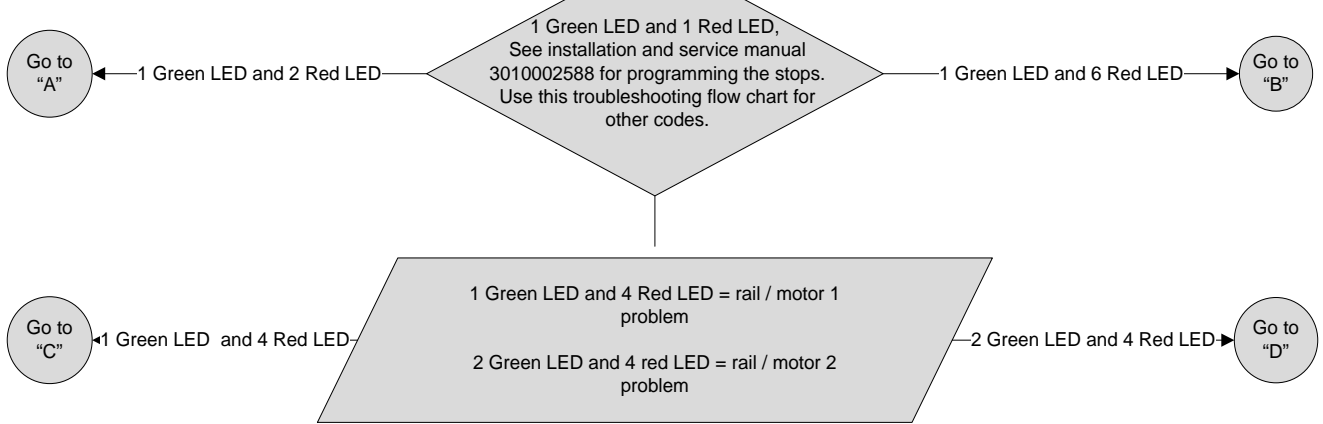
In-wall Motor 2

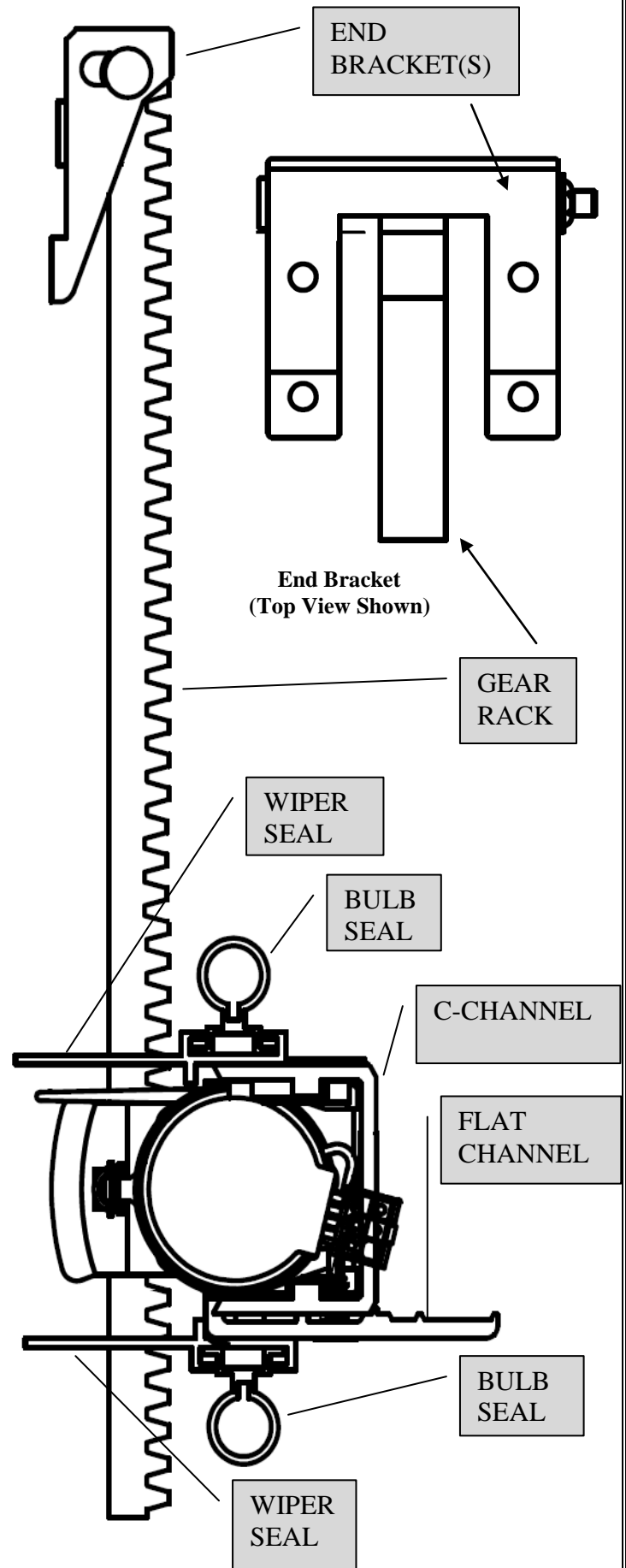
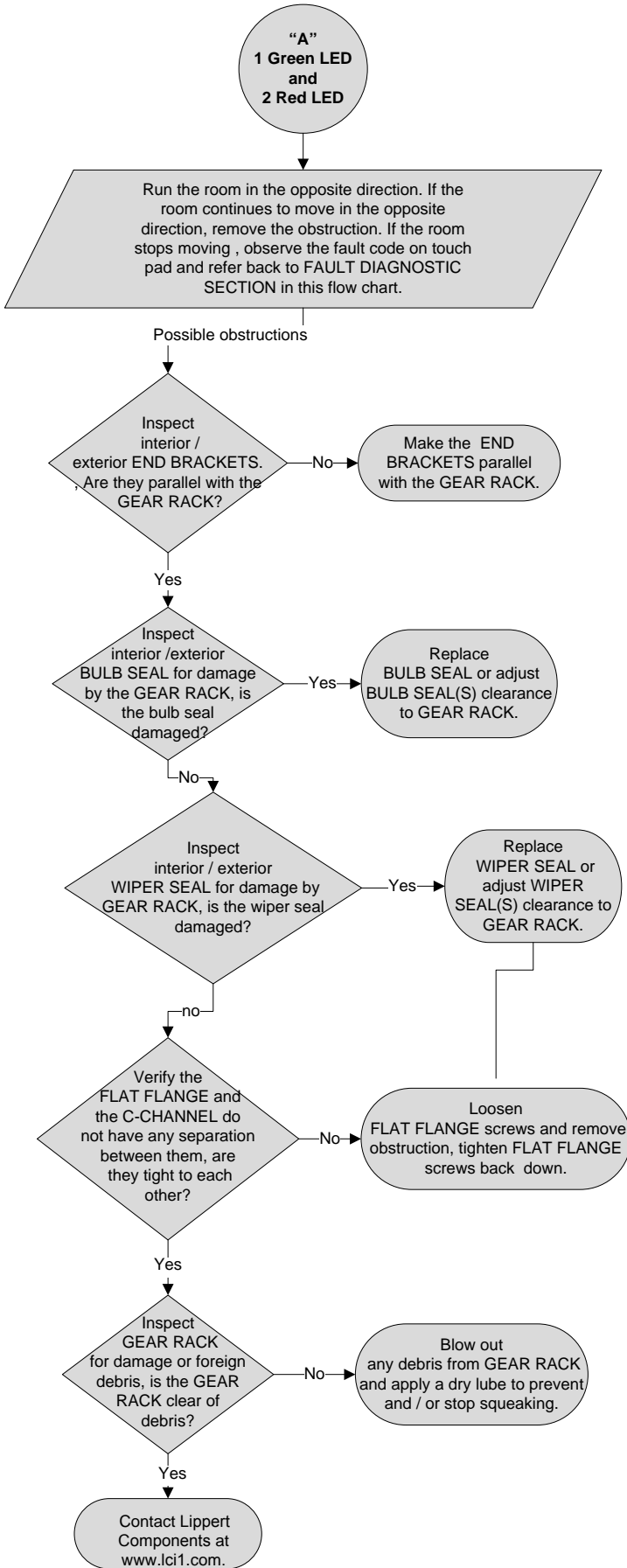


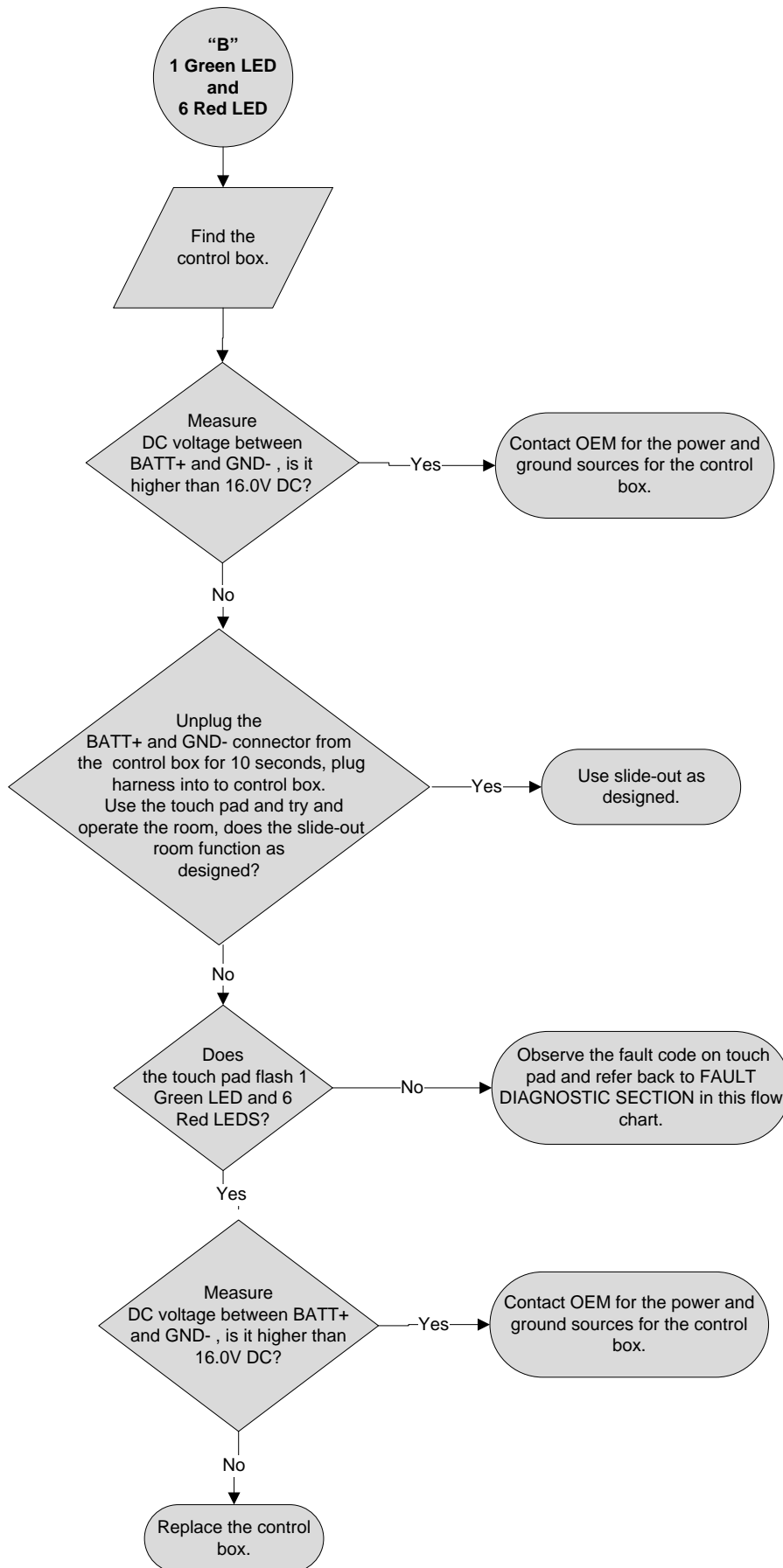
In-wall Motor 1

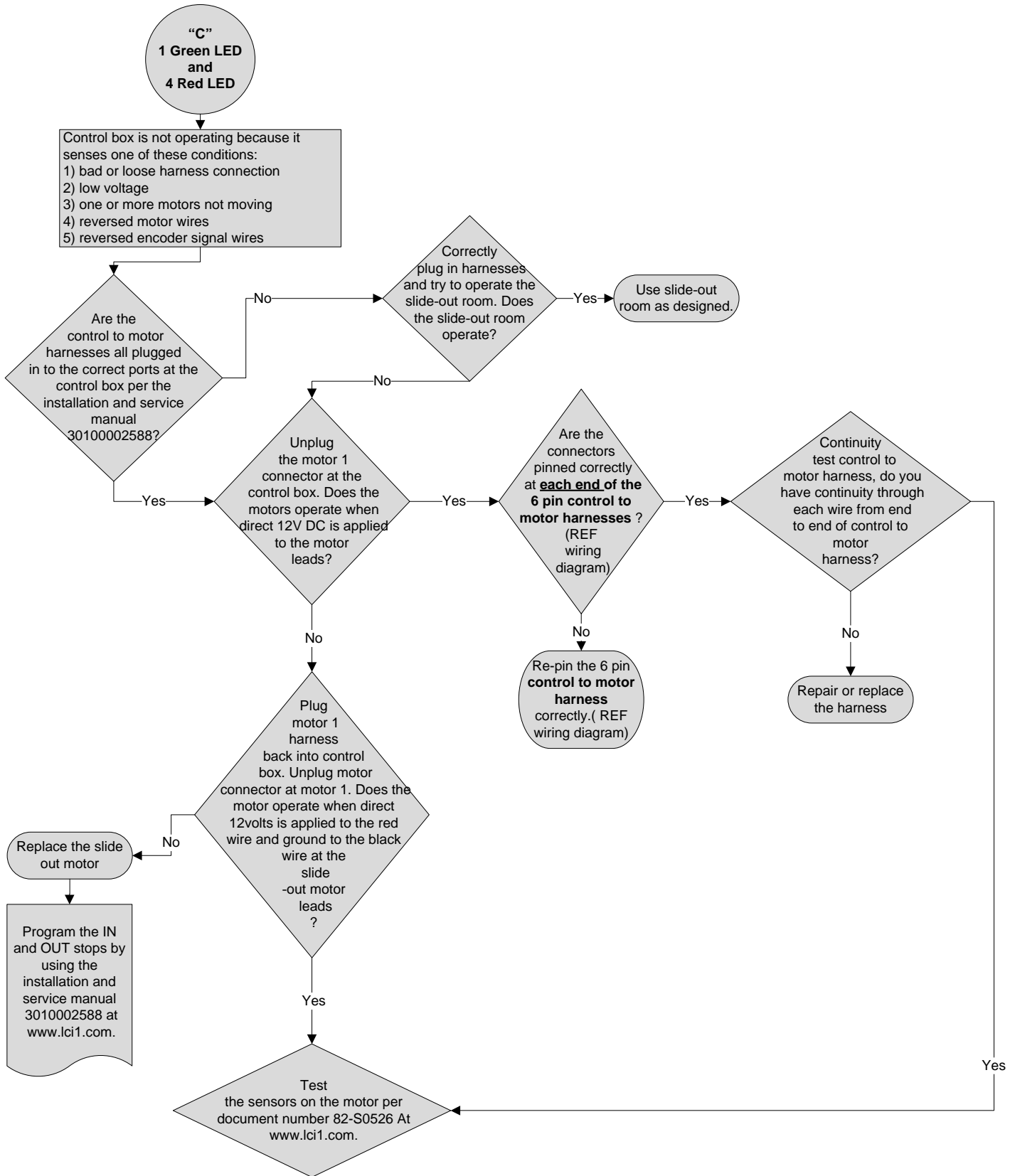


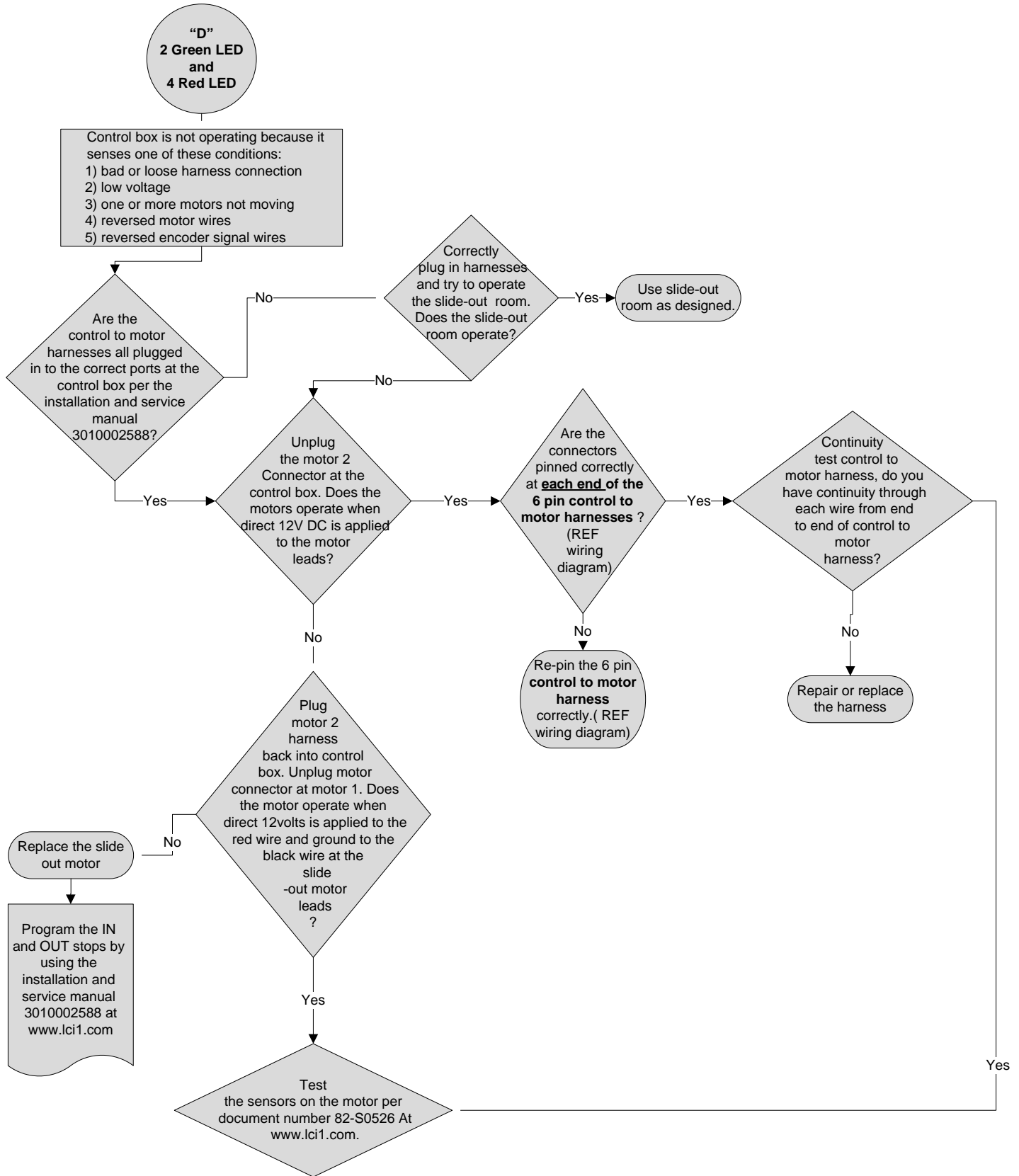
FAULT DIAGNOSTICS SECTION:
 The green LED indicates which rail / motor had the issue, the red LED indicates what the problem is. See the installation and service manual 3010002588 at www.lci1.com for the rail / motor location.

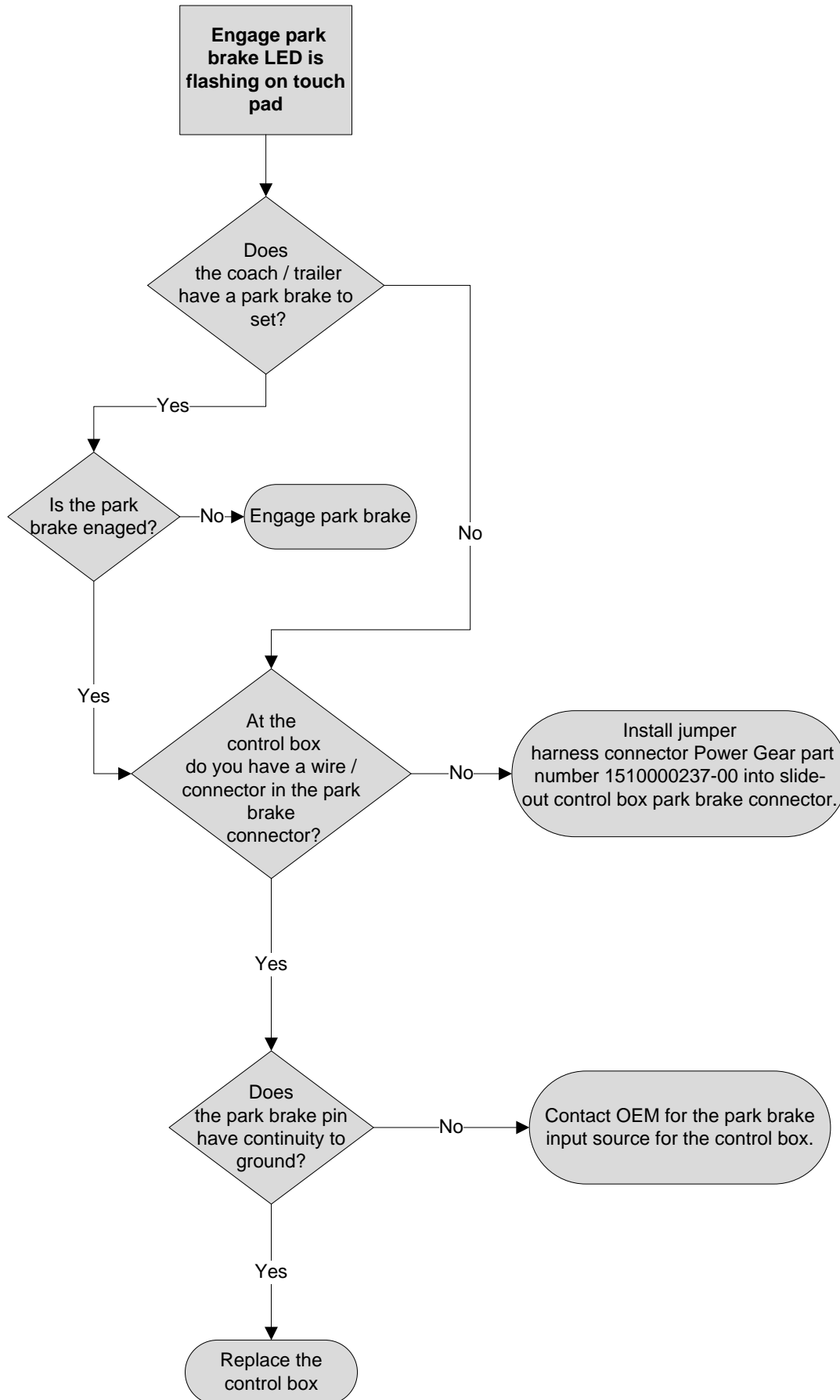


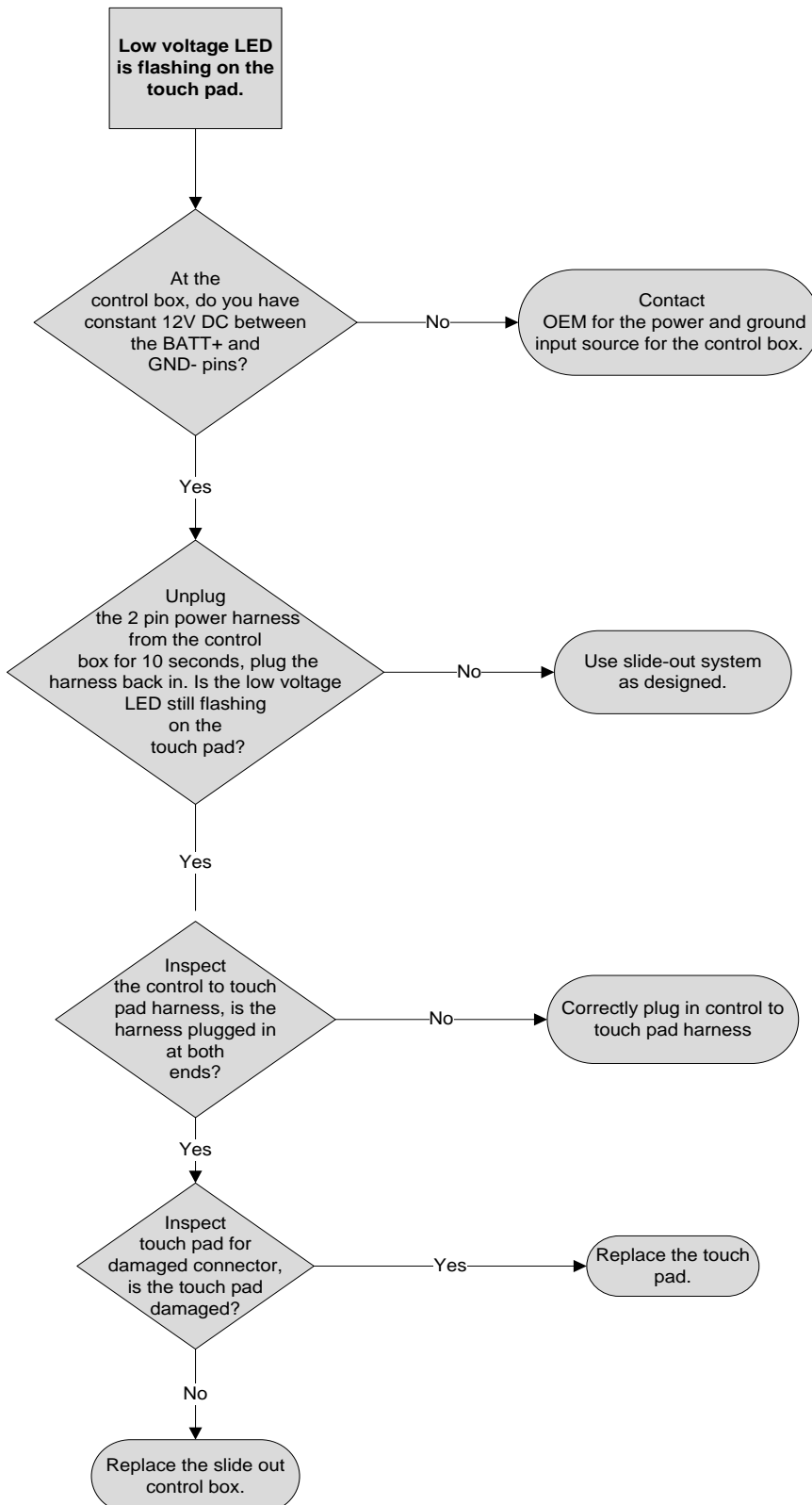












Additional Reference Documents Located At www.lci1.com.

<u>Document #</u>	<u>Description</u>
3010002679	Owner's manual slim rack in-wall slide out system control box part number 1510000199
3010002588	Installation & service manual slim rack in-wall slide out system control box part number 1510000199
82-S0526	Encoder test 1 Dual planetary gear motor sync control part number 1510000199
82-S0527	Encoder test 2 Dual planetary gear motor sync control part number 1510000199